

**Best lifting performance**

- ⇒ Optimised load rating
- ⇒ High maximum reach capacity

Best Precision and user comfort

- ⇒ Full hydrostatic transmission for more comfort and productivity
- ⇒ Smooth boom design with everything inside for best side visibility
- ⇒ Dangerous movements cut out switch

Compact and Strong

- ⇒ 5 m Length
- ⇒ Stabilizers lowering on a 2,26 m width

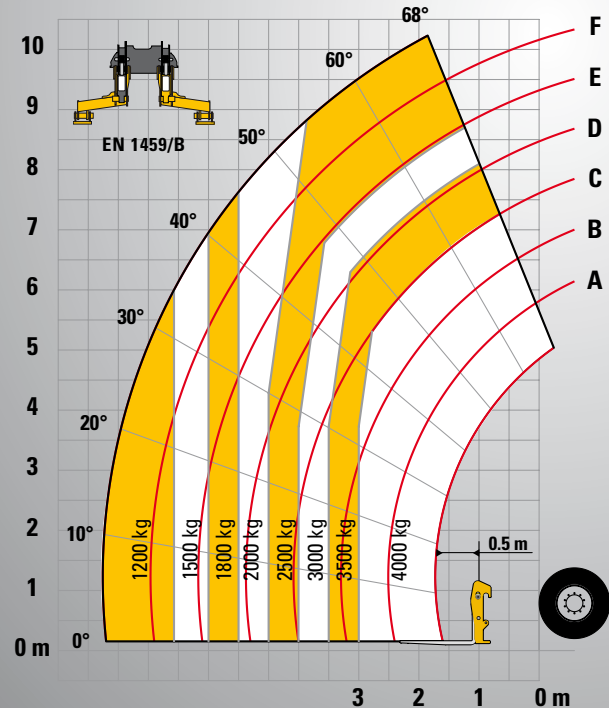
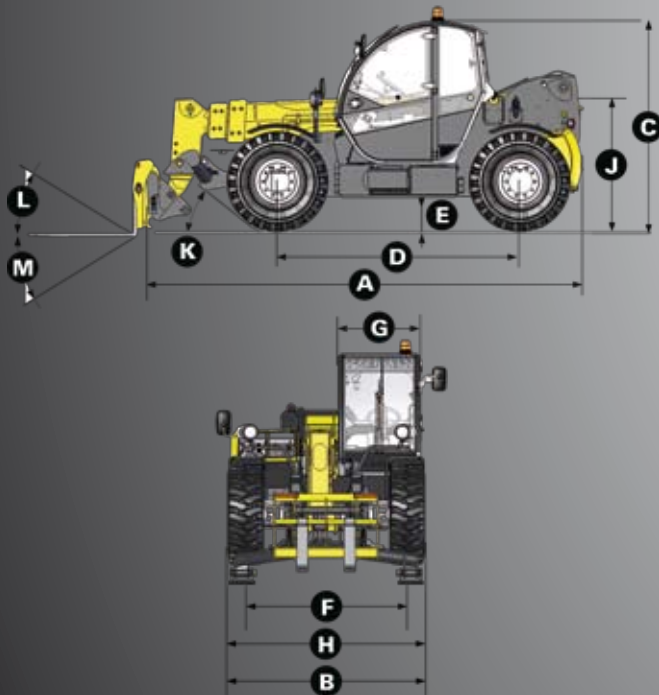


Placing height : 10 m

Maximum lift capacity :
4000 kg
Haulotte 
GROUP

More than lifting





PERFORMANCES

Maximum lift capacity	4000 kg
Lift capacity to full height	2500 kg
Lift capacity at full reach	1200 kg
Maximum fork height	10 m
Reach at maximum fork height	2.2 m
Maximum forward reach	7.2 m

DIMENSIONS

A - Length	4.96 m
B - Width	2.26 m
C - Height	2.42 m
D - Wheelbase	2.78 m
E - Ground clearance	42 cm
F - Track width	1.88 m
G - Cab width	0.96 m
H - Overall width - stabilizers down	2.26 m
J - Height to high boom pivot	1.6 m
K - Approach angle	30 °
L - Upper rotation of forks	18 °
M - Lower rotation of forks	104 °
Turning radius (outside wheels)	3.7 m
Weight with forks	8600 kg
Tyres type	405/70 - 24

ENGINE

Engine model	Perkins 1104
Engine Capacity	4400 cm ³
Engine power output	70 kW / 95 CV
Engine torque	392 Nm
Transmission type	Hydrostatic
Fuel tank	120 l
Engine oil	103 l

STANDARD EQUIPMENT

- Heavy duty Hydrostatic transmission with variable capacity pump and engine
- 4 wheel drive and steer
- Fuel filter with water separator
- Gear equipment pump
- Electrically hydraulic controls
- Proportional controls for movement of boom/telescopic arm/excavation and accessories
- Safety valves on hydraulic jacks
- Possibility to combine mast/telescopic boom/excavation and accessories movements
- Auxilliary hydraulic ports
- Overload/dangerous movements cut out switch
- Stabilizers lowering on a 2,26 m width
- ROPS/FOPS cabin with heating and ventilation

OPTIONS AND ACCESSORIES

- Cold Weather Package
- Biodegradable oil
- Cold environment oil
- Hot environment oil
- Air conditioning
- Working lights
- 4-in-1 bucket and standards
- Jib attachment and winch

