

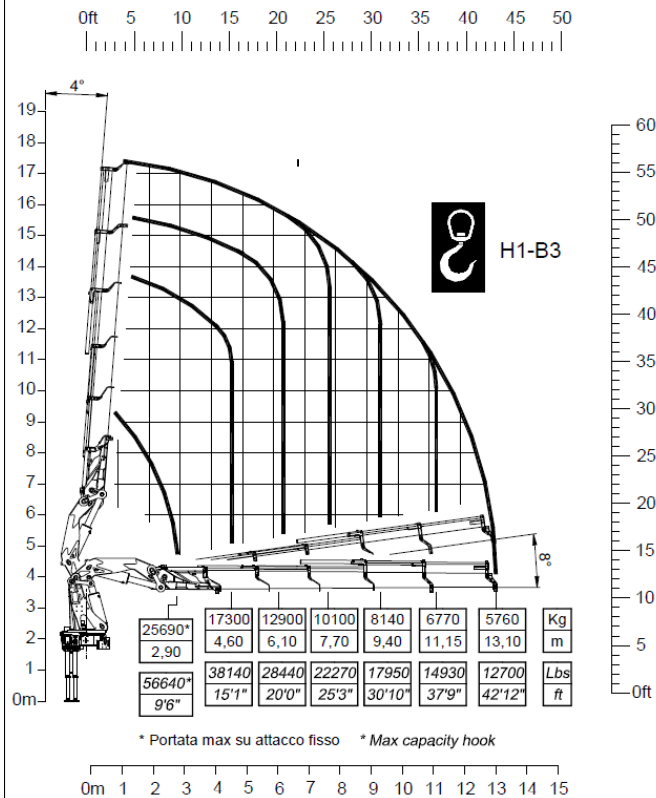


power & technology

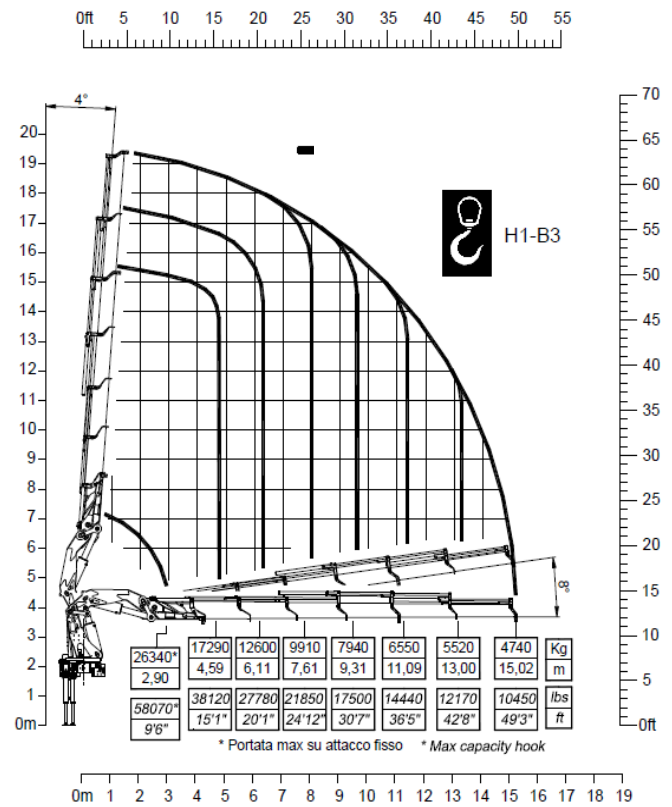
- ▶ Scheda tecnica
- ▶ Fiche technique
- ▶ Technische Daten
- ▶ Technical features
- ▶ Ficha tecnica
- ▶ Folha de dados



/5



/6



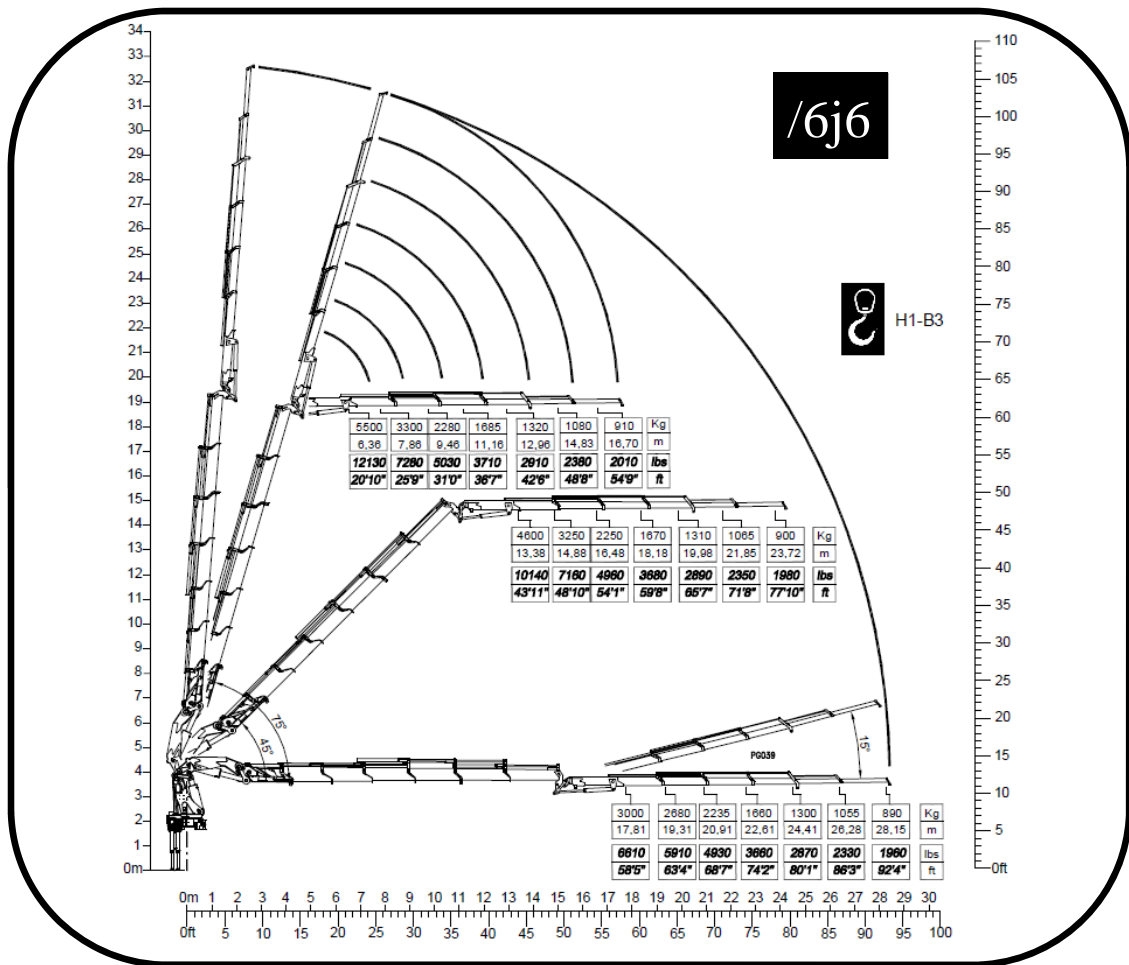
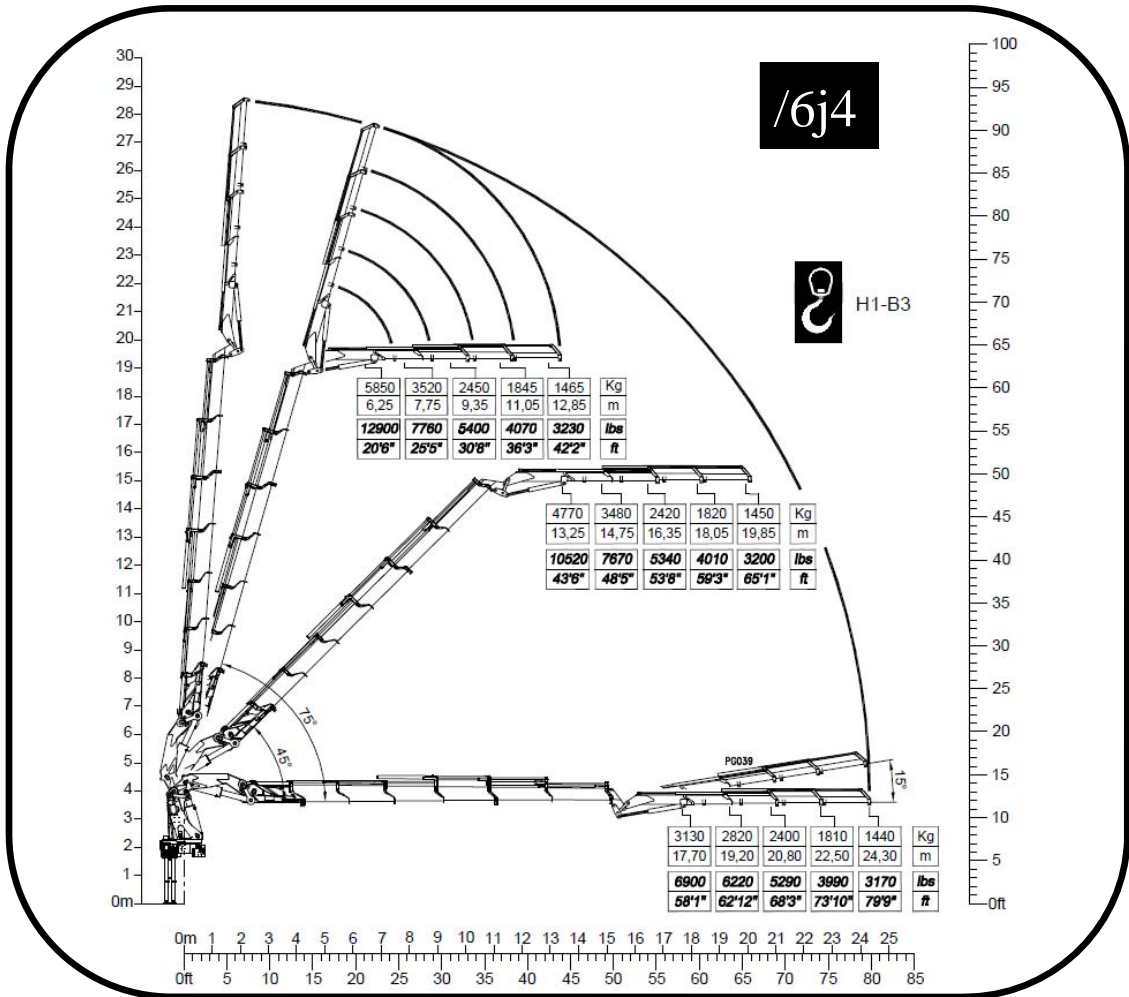
/5

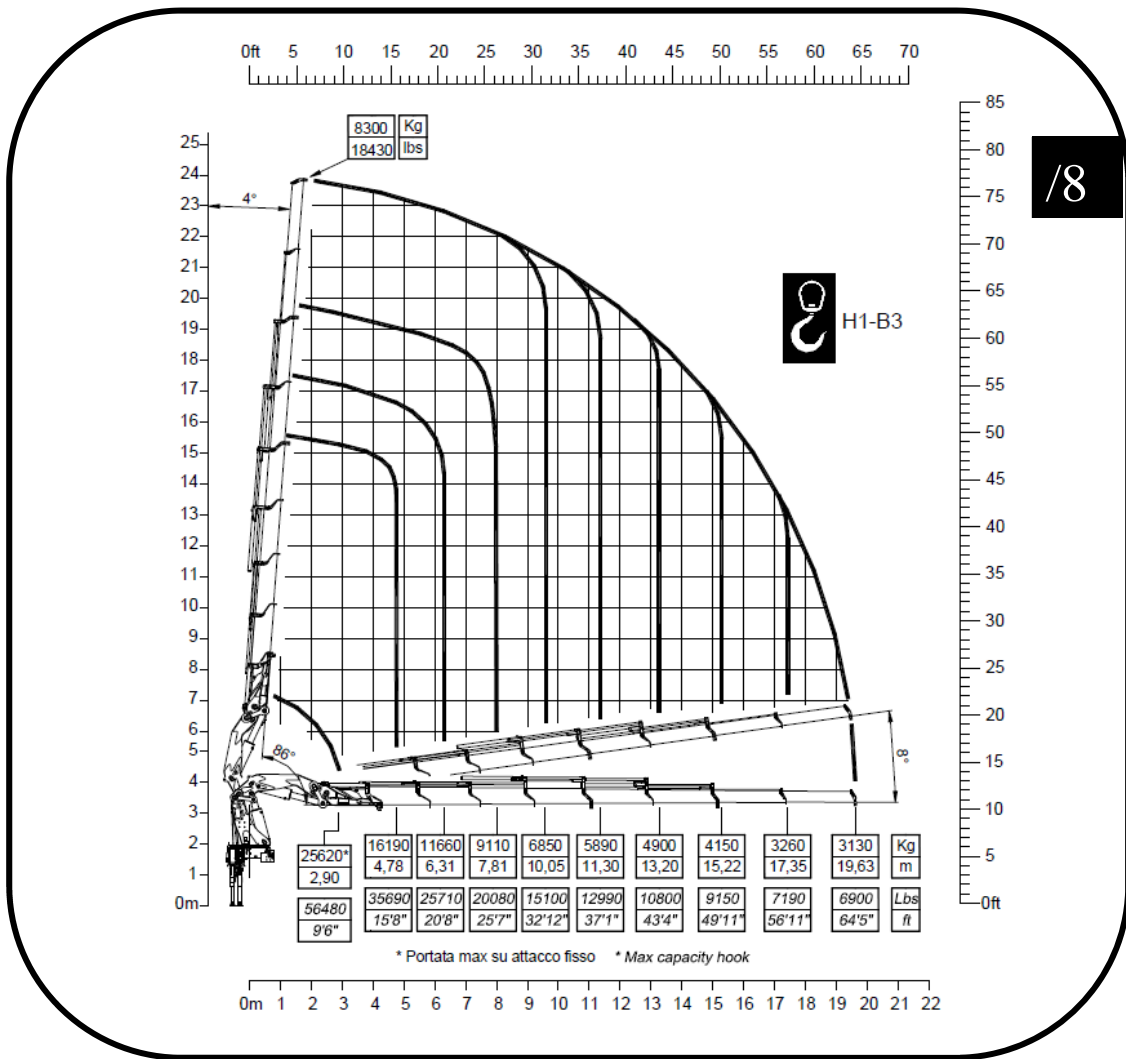
/6

<ul style="list-style-type: none"> - MOMENTO MAX SOLLEVAMENTO - HUBMOMENT - COUPLE DE LEVAGE - MOMENTO - MOMENTO - MAX LIFTING MOMENT 	780 kN.m	768 kN.m	<ul style="list-style-type: none"> - PORTATA POMPA OTTIMALE - FÖRDERMENGE DER PUMPE - PORTÉE DE LA POMPE - CAUDAL DE LA BOMBA - CAUDAL DA BOMBA - RECOMMENDE PUMP DELIVERY 	80 l/m	80 l/m
<ul style="list-style-type: none"> - ANGOLO DI ROTAZIONE - SCHWENKBEREICH - ROTATION - GIRO - ROTAÇÃO - SLEWING ANGLE 	∞	∞	<ul style="list-style-type: none"> - CAPACITÀ SERBATOIO OLIO - FASSUNGSVERMÖGEN DEL ÖLBEHALTERS - CAPACITÉ RÉSERVOIR HUILE - CAPACIDAD DEL DEPOSITO DE ACEITE I - CAPACIDAD DO DEPÓSITO DE OLEO - OIL TANK CAPACITY 	300 l	300 l
<ul style="list-style-type: none"> - COPPIA MAX ROTAZIONE - MAX SCHWENKMOMENT - COUPLE MAXI. DE ROTATION - POTENCIA MÁXIMA DE GIRO - BINARIO MÁXIMO DE ROTAÇÃO - SLEWING TORQUE 	8200 daN.m	8200 daN.m	<ul style="list-style-type: none"> - VEICOLO MIN. P.T.T. - LKW MIN. G.G.W. - CAMION MIN. P.T.A.C. - CAMION PESO MIN. P.T.T. - P.B. MIN CAMION - TRUCK MIN. G.V.W 	32 t	32 t
<ul style="list-style-type: none"> - PRESSIONE MAX LAVORO - DRUCK - PRESSION - PRESSIÓN - PRESSÃO - MAX WORKING PRESSURE 	345 bar	345 bar	<ul style="list-style-type: none"> - PESO GRU - GEWICHT - POIDS - PESO - PESO - CRANE WEIGHT 	8716 Kg	8980 Kg

/5

/6

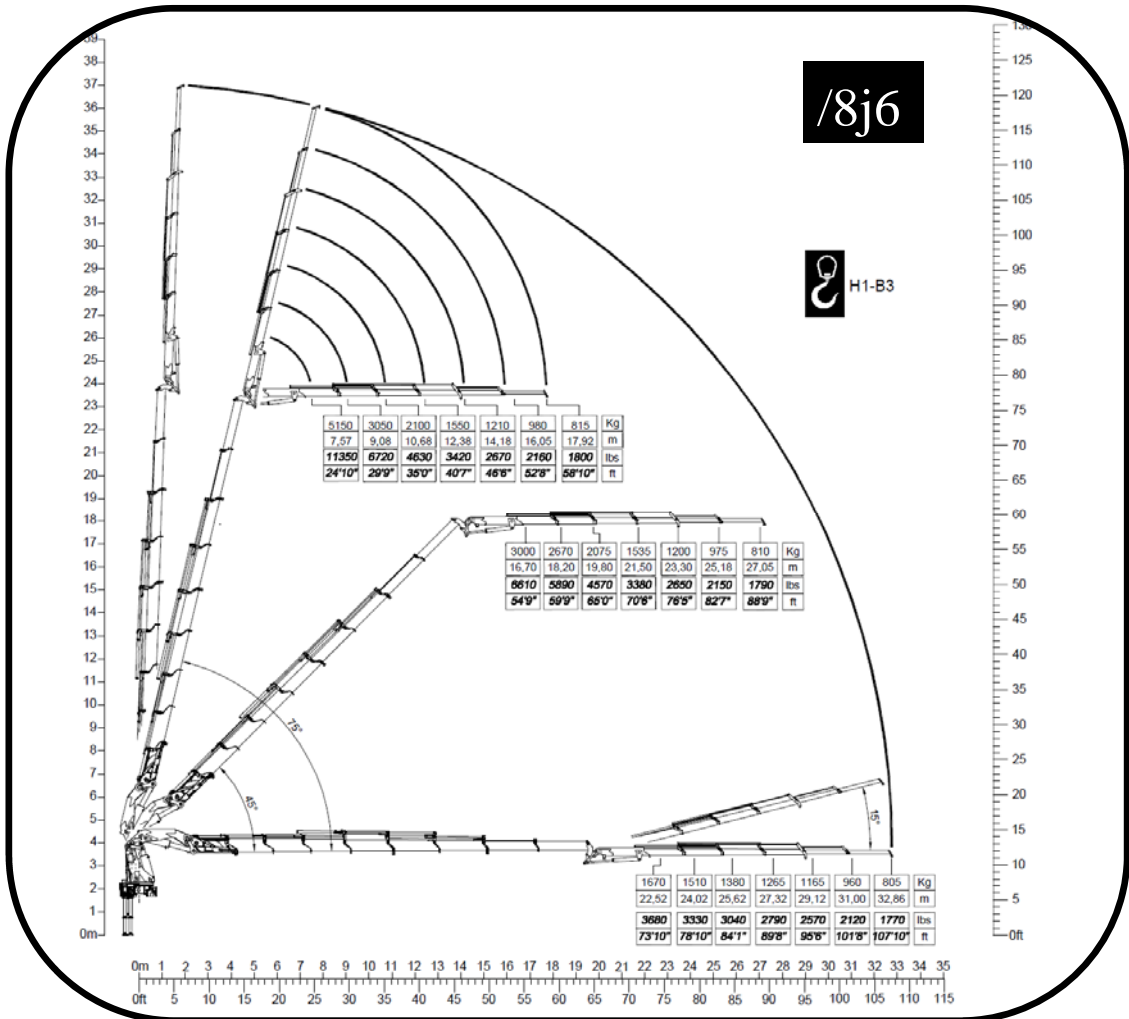
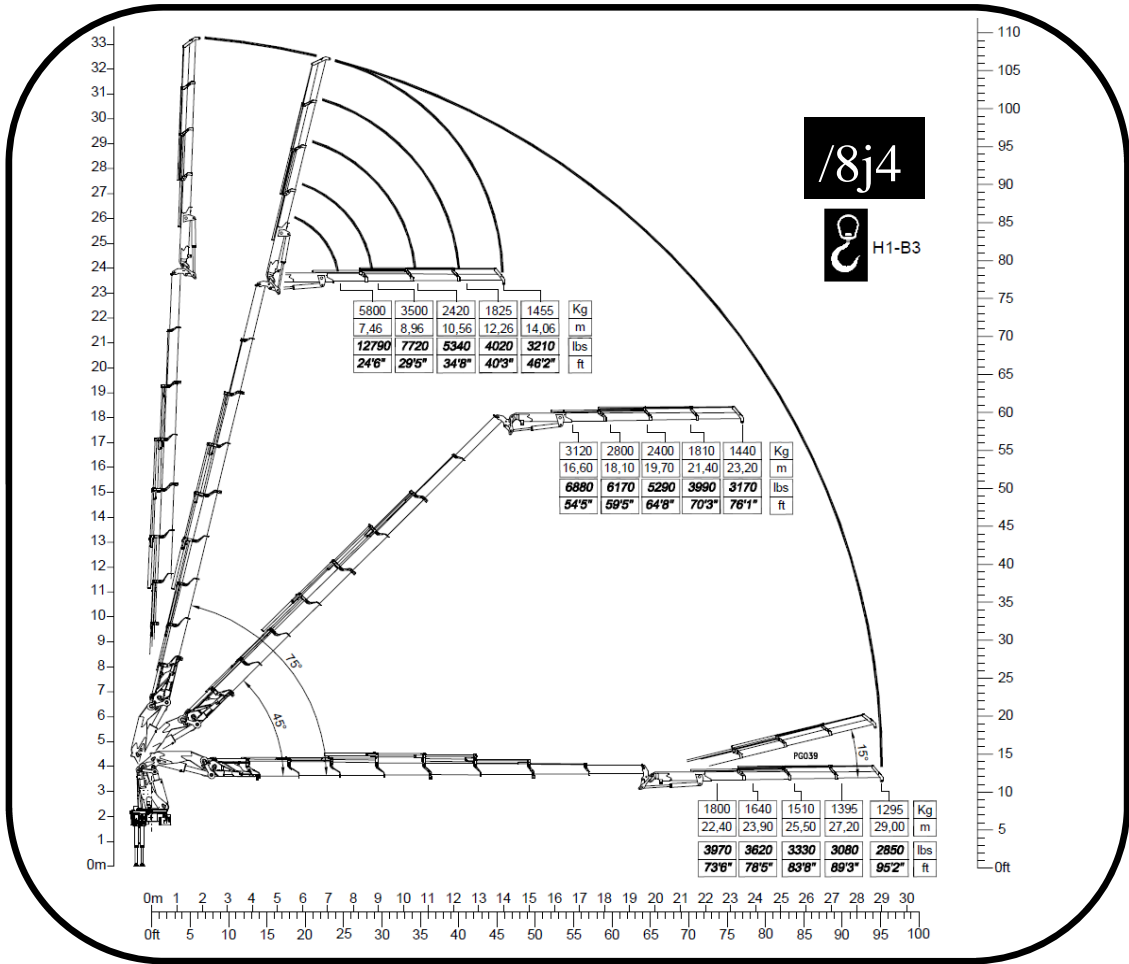


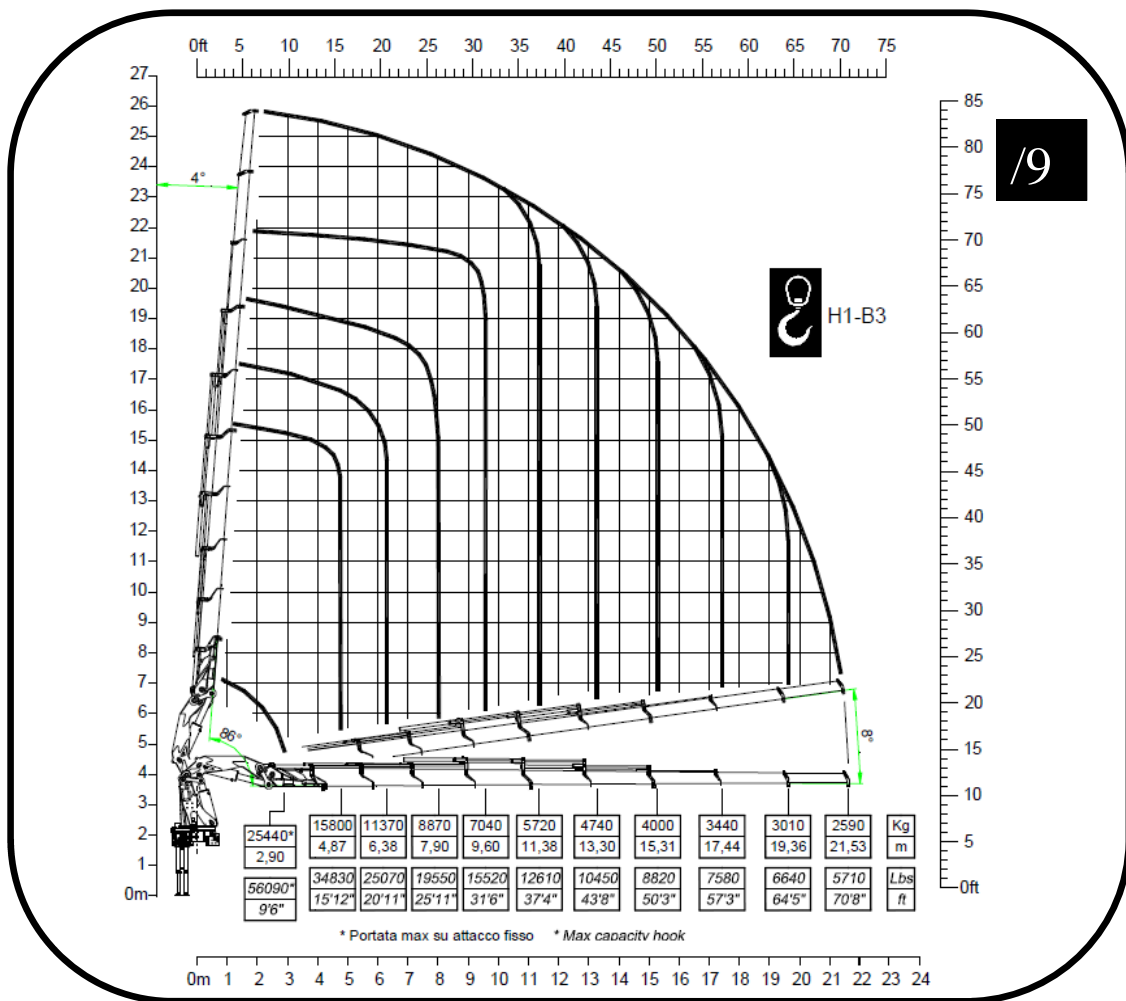


/8

/8

<ul style="list-style-type: none"> - MOMENTO MAX SOLLEVAMENTO - HUBMOMENT - COUPLE DE LEVAGE - MOMENTO - MOMENTO - MAX LIFTING MOMENT 	<p>747 kN.m</p> <p>560105 lbs.ft</p>	<ul style="list-style-type: none"> - PORTATA POMPA OTTIMALE - FÖRDERMENGE DER PUMPE - PORTÉE DE LA POMPE - CAUDAL DE LA BOMBA - CAUDAL DA BOMBA - RECOMMENDED PUMP DELIVERY 	<p>80 l/m</p> <p>21 gal/min</p>
<ul style="list-style-type: none"> - ANGOLO DI ROTAZIONE - SCHWENKBEREICH - ROTATION - GIRO - ROTAÇÃO - SLEWING ANGLE 	<p>∞</p>	<ul style="list-style-type: none"> - CAPACITÀ SERBATOIO OLIO - FASSUNGSVERMÖGEN DEL ÖLBEHALTERS - CAPACITÉ RÉSERVOIR HUILE - CAPACIDAD DEL DEPOSITO DE ACEITE I - CAPACIDAD DO DEPÓSITO DE OLEO - OIL TANK CAPACITY 	<p>300 l</p> <p>79 gal</p>
<ul style="list-style-type: none"> - COPPIA MAX ROTAZIONE - MAX SCHWENKMOMENT - COUPLE MAXI. DE ROTATION - POTENCIA MÁXIMA DE GIRO - BINARIO MÁXIMO DE ROTAÇÃO - SLEWING TORQUE 	<p>8200 daN.m</p> <p>59320 Psi</p>	<ul style="list-style-type: none"> - VEICOLO MIN. P.T.T. - LKW MIN. G.G.W. - CAMION MIN. P.T.A.C. - CAMION PESO MIN. P.T.T. - P.B. MIN CAMION - TRUCK MIN. G.V.W 	<p>32 t</p>
<ul style="list-style-type: none"> - PRESSIONE MAX LAVORO - DRUCK - PRESSION - PRESSIÓN - PRESSÃO - MAX WORKING PRESSURE 	<p>345 bar</p> <p>5002 Psi</p>	<ul style="list-style-type: none"> - PESO GRU - GEWICHT - POIDS - PESO - PESO - CRANE WEIGHT 	<p>9440 kg</p> <p>20810 Lbs</p> <p>8,14 10230kg 22550 lbs</p> <p>8,16 10340 kg 22800 lbs</p>



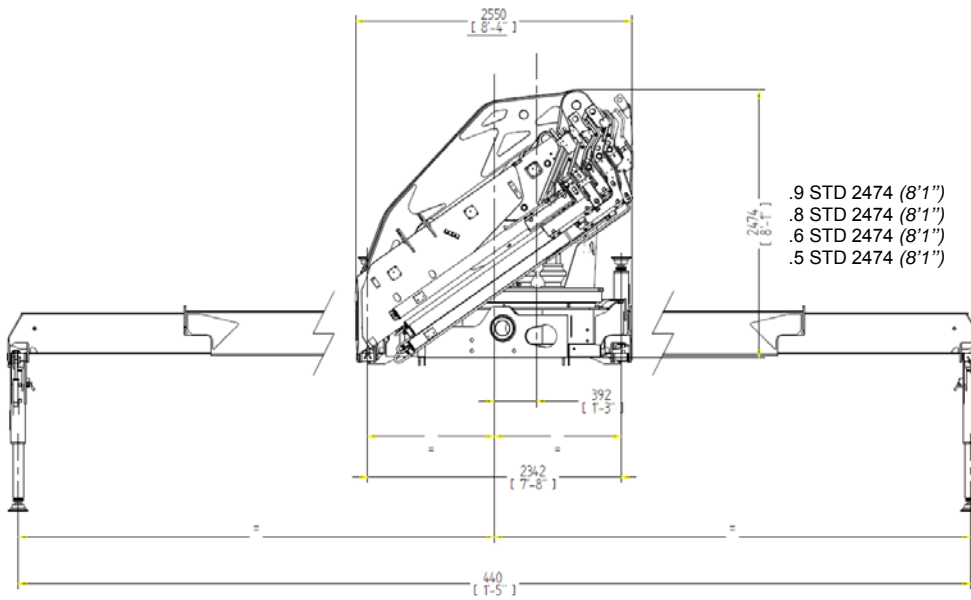


/9

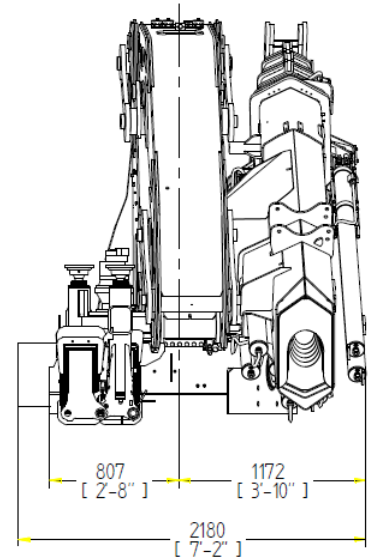
/9

<ul style="list-style-type: none"> - MOMENTO MAX SOLLEVAMENTO - HUBMOMENT - COUPLE DE LEVAGE - MOMENTO - MOMENTO - MAX LIFTING MOMENT 	<p>742 kN.m</p> <p>547315 lbs.ft</p>	<ul style="list-style-type: none"> - PORTATA POMPA OTTIMALE - FÖRDERMENGE DER PUMPE - PORTÉE DE LA POMPE - CAUDAL DE LA BOMBA - CAUDAL DA BOMBA - RECOMMENDED PUMP DELIVERY 	<p>80 l/m</p> <p>21 gal/min</p>
<ul style="list-style-type: none"> - ANGOLO DI ROTAZIONE - SCHWENKBEREICH - ROTATION - GIRO - ROTAÇÃO - SLEWING ANGLE 	<p>∞</p>	<ul style="list-style-type: none"> - CAPACITÀ SERBATOIO OLIO - FASSUNGSVERMÖGEN DEL ÖLBEHALTERS - CAPACITÉ RÉSERVOIR HUILE - CAPACIDAD DEL DEPOSITO DE ACEITE I - CAPACIDAD DO DEPÓSITO DE OLEO - OIL TANK CAPACITY 	<p>300 l</p> <p>79 gal</p>
<ul style="list-style-type: none"> - COPPIA MAX ROTAZIONE - MAX SCHWENKMOMENT - COUPLE MAXI. DE ROTATION - POTENCIA MÁXIMA DE GIRO - BINARIO MÁXIMO DE ROTAÇÃO - SLEWING TORQUE 	<p>8200 daN.m</p> <p>59320 Psi</p>	<ul style="list-style-type: none"> - VEICOLO MIN. P.T.T. - LKW MIN. G.G.W. - CAMION MIN. P.T.A.C. - CAMION PESO MIN. P.T.T. - P.B. MIN CAMION - TRUCK MIN. G.V.W 	<p>32 t</p>
<ul style="list-style-type: none"> - PRESSIONE MAX LAVORO - DRUCK - PRESSION - PRESSIÓN - PRESSÃO - MAX WORKING PRESSURE 	<p>345 bar</p> <p>5002 Psi</p>	<ul style="list-style-type: none"> - PESO GRU - GEWICHT - POIDS - PESO - PESO - CRANE WEIGHT 	<p>9620 kg</p> <p>21210 lbs</p>

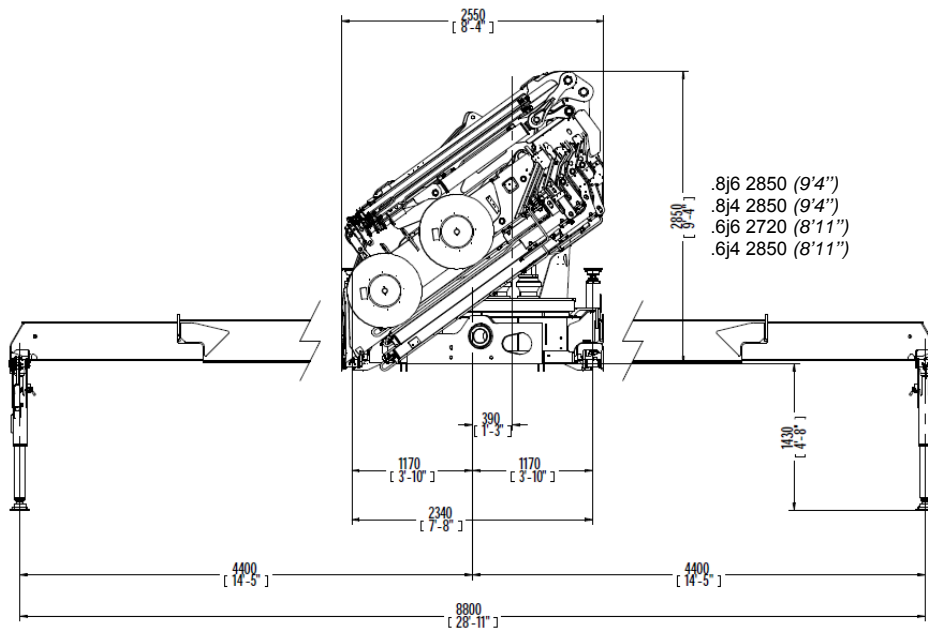
I dati e le descrizioni del presente catalogo sono forniti a titolo indicativo e non sono vincolanti. COPMA si riserva il diritto di modificarli senza preavviso. Technical features are not binding. COPMA reserves itself the right to any modification without notice.



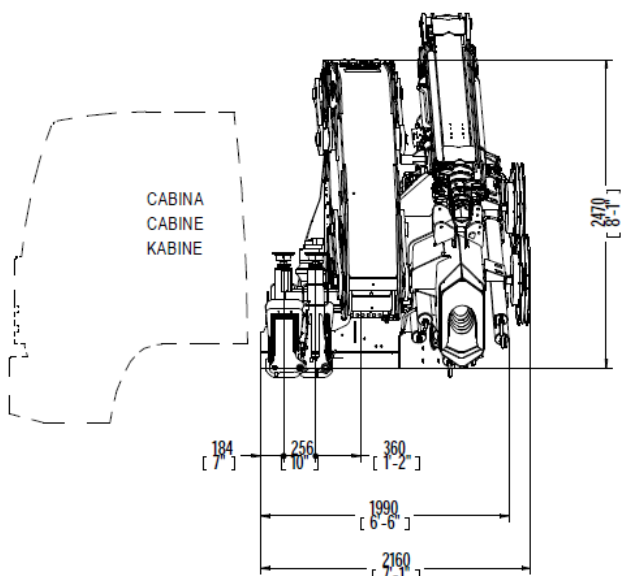
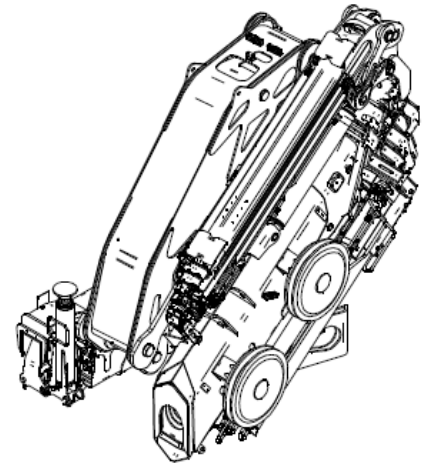
- .9 STD 2474 (8'1")
- .8 STD 2474 (8'1")
- .6 STD 2474 (8'1")
- .5 STD 2474 (8'1")



- .9 STD 2180 (7'2")
- .8 STD 2180 (7'2")
- .6 STD 2000 (6'7")
- .5 STD 2000 (6'7")

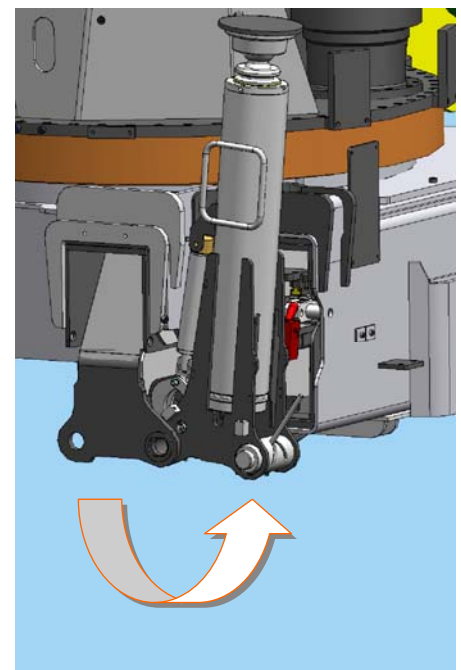


- .8j6 2850 (9'4")
- .8j4 2850 (9'4")
- .6j6 2720 (8'11")
- .6j4 2850 (8'11")



CABINA
CABINE
KABINE

- .8j6 2160 (7'1")
- .8j4 2160 (7'1")
- .6j6 2160 (7'1")
- .6j4 2160 (7'1")





power & technology
gru_truck cranes

www.copma-cranes.com



Costruttore C.P.S. srl Via Emilia levante, 281, 48014 Castel Bolognese (RA) – ITALIA
Tel. +39 (0)546 653833 Fax. +39 (0)546 656205, E-Mail info@copma-cranes.com www.copma-cranes.com