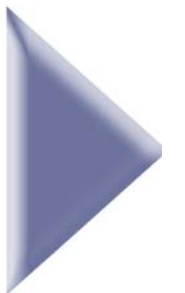


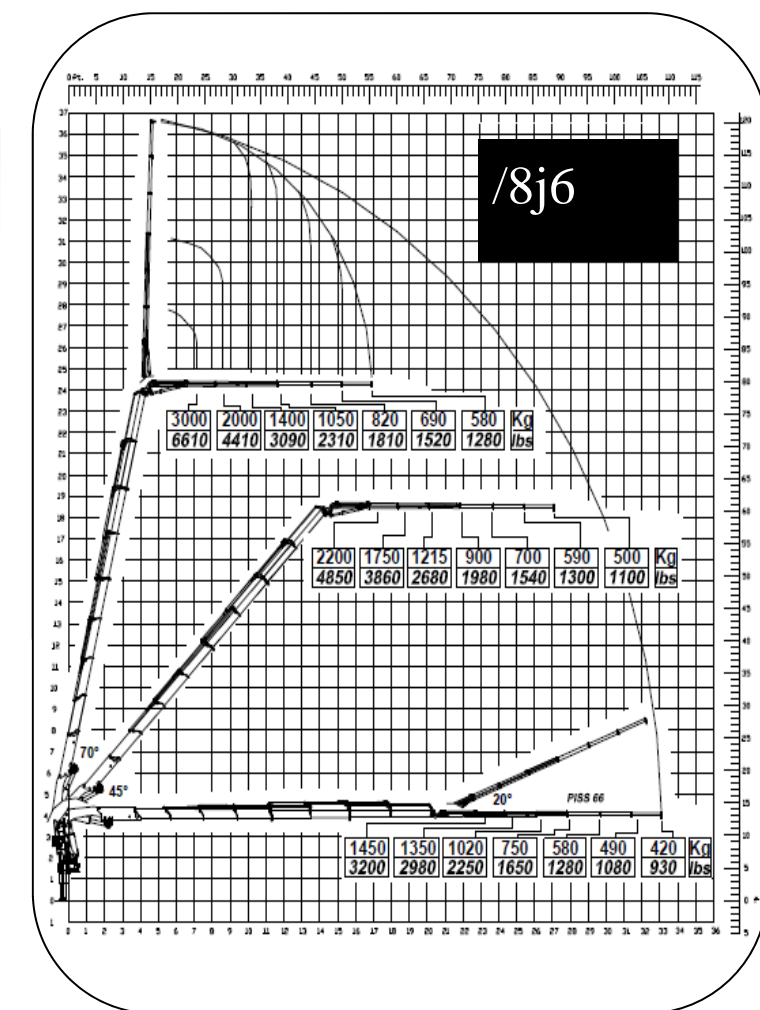
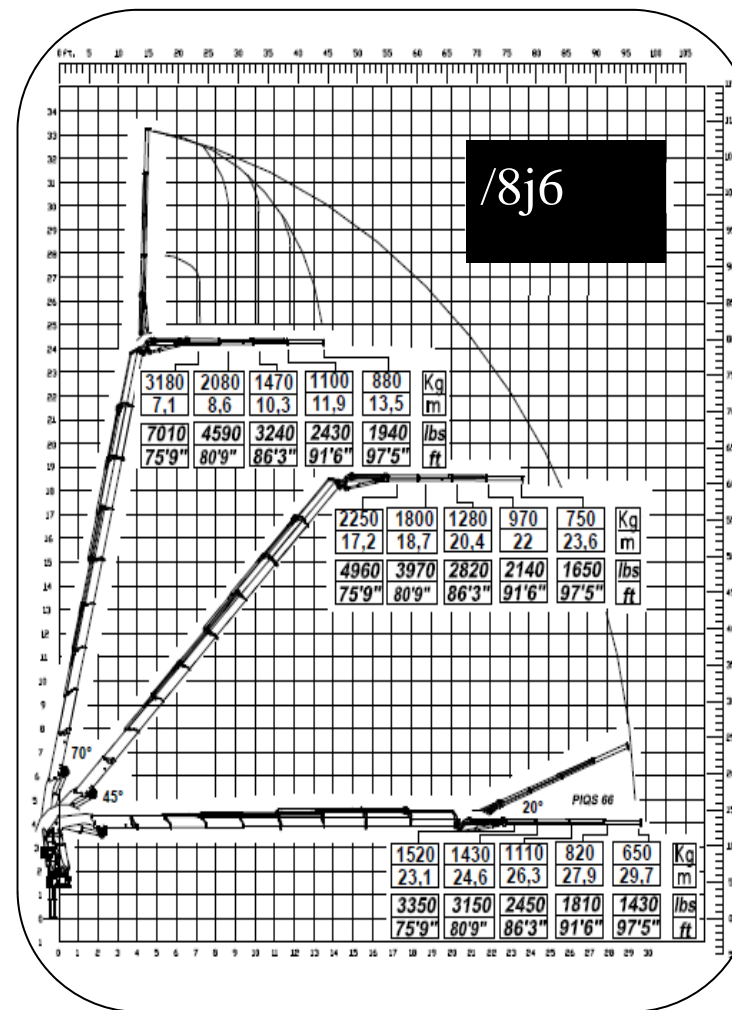
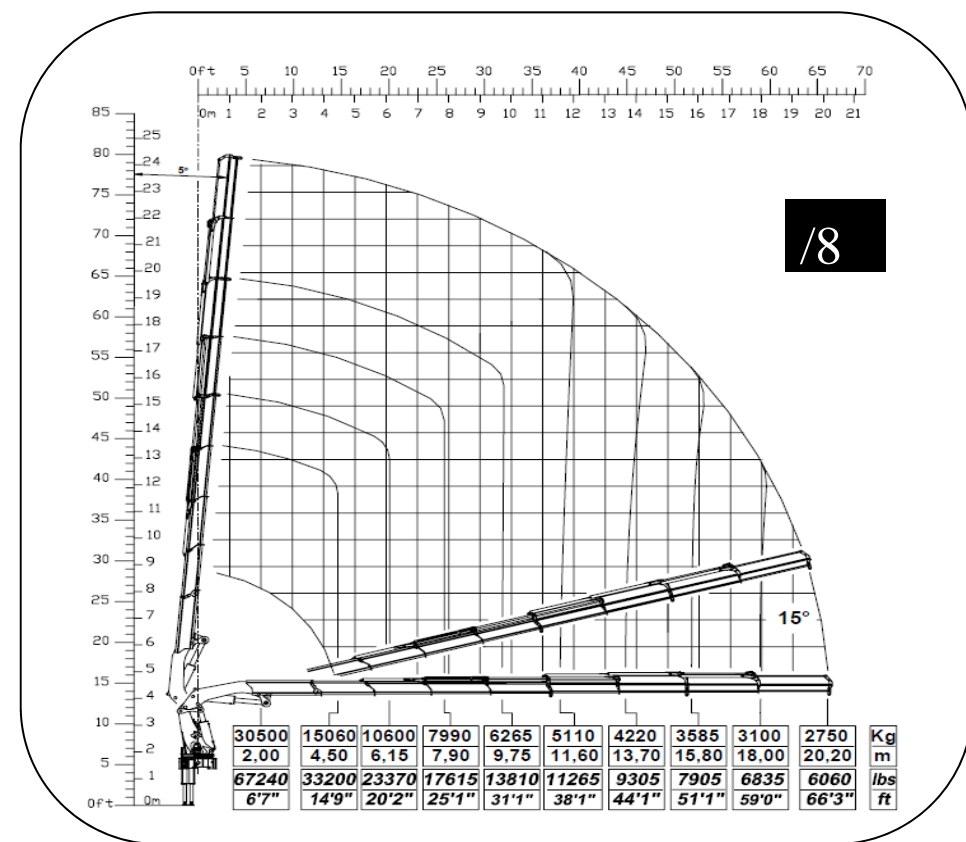
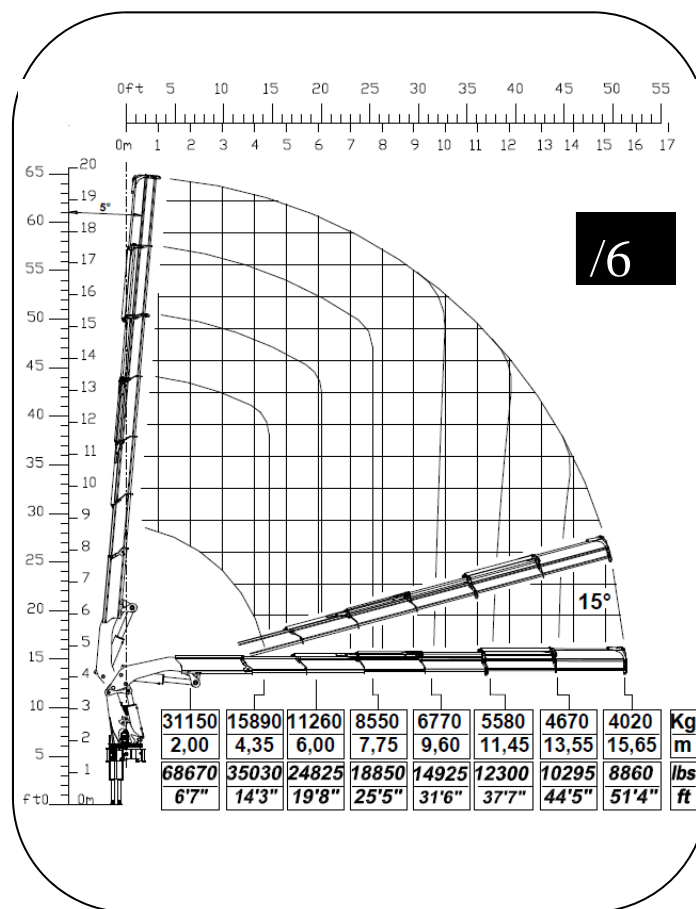
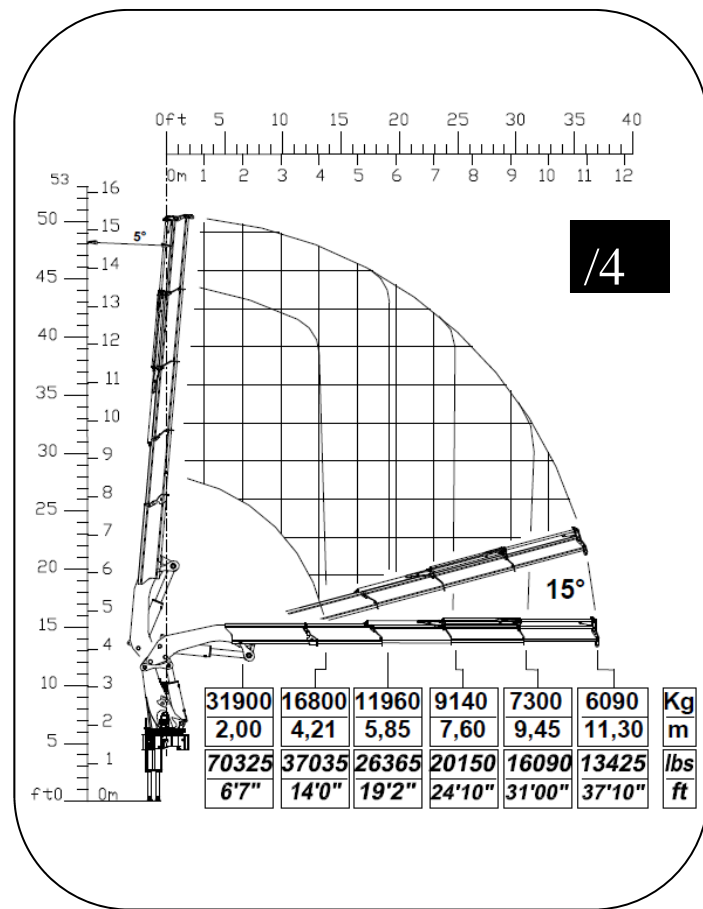
gru\_truck cranes



power & technology

- ▶ Scheda tecnica
- ▶ Fiche technique
- ▶ Technische Daten
- ▶ Technical features
- ▶ Ficha tecnica
- ▶ Folha de dados





|   | /4                              | /6                              | /8                              |   | /4                           | /6                           | /8   |
|---|---------------------------------|---------------------------------|---------------------------------|---|------------------------------|------------------------------|--|
| - MOMENTO MAX SOLLEVAMENTO<br>- HUBMOMENT<br>- COUPLE DE LEVAGE<br>- MOMENTO<br>- MOMENTO<br>- MAX LIFTING MOMENT   | 694<br>kN.m<br>511868<br>lbs.ft | 678<br>kN.m<br>500067<br>lbs.ft | 665<br>kN.m<br>490479<br>lbs.ft | - PORTATA POMPA OTTIMALE<br>- FÖRDERMENGE DER PUMPE<br>- PORTÉE DE LA POMPE<br>- CAUDAL DE LA BOMBA<br>- CAUDAL DA BOMBA<br>- RECOMMENDED PUMP DELIVERY   | 70<br>l/m<br>18,4<br>gal/min | 70<br>l/m<br>18,4<br>gal/min | 70<br>l/m<br>18,4<br>gal/min   |
| - ANGOLO DI ROTAZIONE<br>- SCHWENKBEREICH<br>- ROTATION<br>- GIRO<br>- ROTAÇÃO<br>- SLEWING ANGLE   | ∞                               | ∞                               | ∞                               | - CAPACITÀ SERBATOIO OLIO<br>- FASSUNGSVERMÖGEN DEL ÖLBEHALTERS<br>- CAPACITÉ RÉSERVOIR HUILE<br>- CAPACIDAD DEL DEPOSITO DE ACEITE I<br>- CAPACIDAD DO DEPÓSITO DE OLEO<br>- OIL TANK CAPACITY | 250<br>l<br>66<br>gal        | 250<br>l<br>66<br>gal        | 250<br>l<br>66<br>gal  |
| - COPPIA MAX ROTAZIONE<br>- MAX SCHWENKMOMENT<br>- COUPLE MAXI. DE ROTATION<br>- POTENCIA MÁXIMA DE GIRO<br>- BINARIO MÁXIMO DE ROTAÇÃO<br>- SLEWING TORQUE | 8250<br>daN.m<br>60849<br>Psi   | 8250<br>daN.m<br>60849<br>Psi   | 8250<br>daN.m<br>60849<br>Psi   | - VEICOLO MIN. P.T.T.<br>- LKW MIN. G.G.W.<br>- CAMION MIN. P.T.A.C.<br>- CAMION PESO MIN. P.T.T.<br>- P.B. MIN CAMION<br>- TRUCK MIN. G.V.W  | 32<br>t                      | 32<br>t                      | 32<br>t  |
| - PRESSIONE MAX LAVORO<br>- DRUCK<br>- PRESSION<br>- PRESSIÓN<br>- PRESSÃO<br>- MAX WORKING PRESSURE  | 345<br>bar<br>5004<br>Psi       | 345<br>bar<br>5004<br>Psi       | 345<br>bar<br>5004<br>Psi       | - PESO GRU<br>- GEWICHT<br>- POIDS<br>- PESO<br>- PESO<br>- CRANE WEIGHT  | 7180<br>Kg<br>15829<br>lbs   | 7650<br>kg<br>16865<br>lbs   | 8100<br>kg<br>17857<br>lbs<br>8,4<br>8870kg<br>19554lbs<br>8,6<br>8960kg<br>19775lbs |

I dati e le descrizioni del presente catalogo sono forniti a titolo indicativo e non sono vincolanti. COPMA si riserva il diritto di modificarli senza preavviso. Technical features are not binding. COPMA reserves itself the right to any modification without notice.