



COPMA

UNICERT



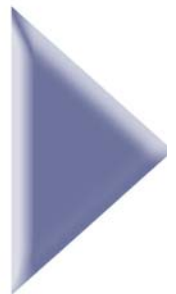
_450

gru_truck_cranes

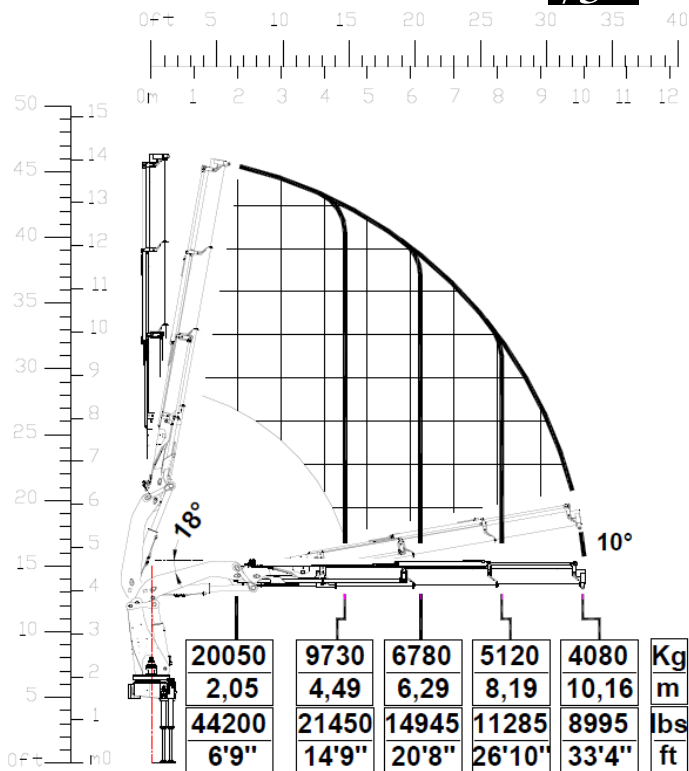


power & technology

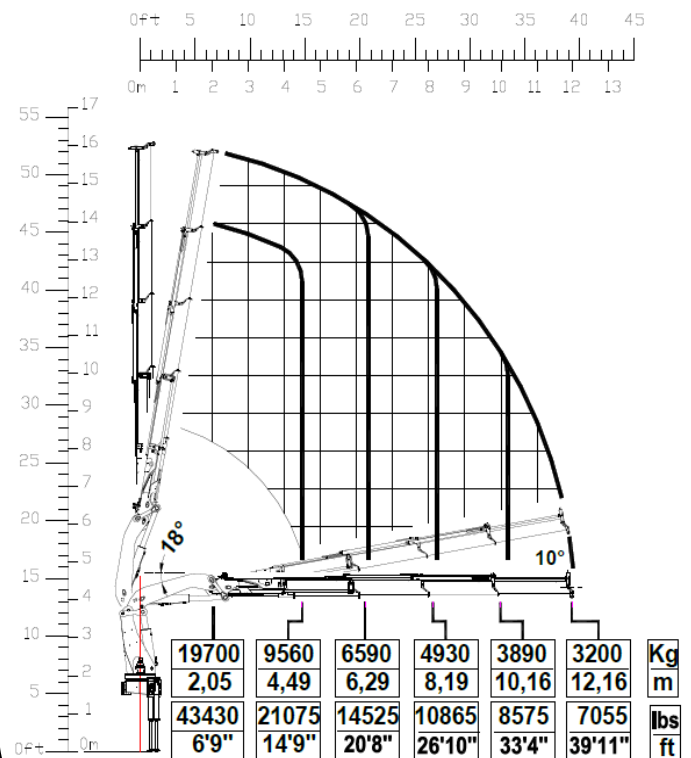
- ▶ Scheda tecnica
- ▶ Fiche technique
- ▶ Technische Daten
- ▶ Technical features
- ▶ Ficha tecnica
- ▶ Folha de dados



/3



/4



/3

/4

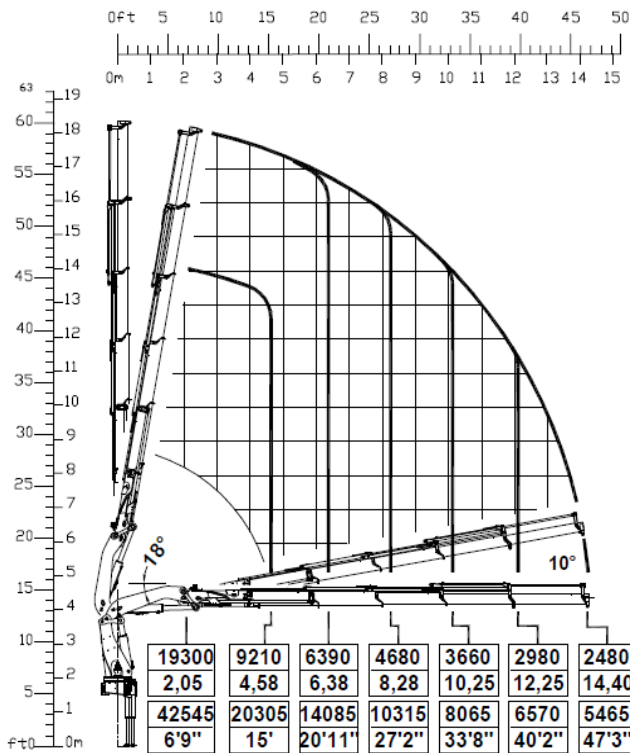
/3

/4

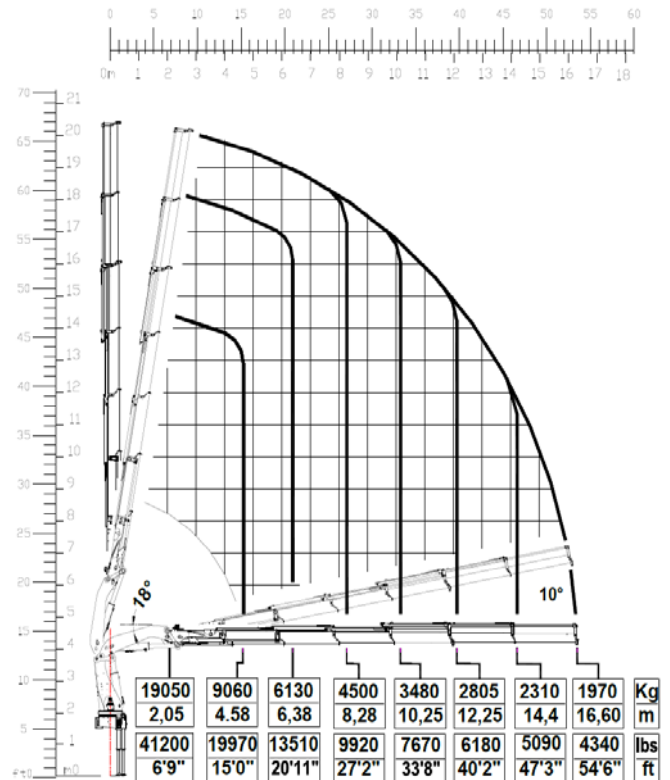
- MOMENTO MAX SOLLEVAMENTO - HUBMOMENT - COUPLE DE LEVAGE - MOMENTO - MOMENTO - MAX LIFTING MOMENT	429 kN.m 310079 lbs.ft	421 kN.m 304567 lbs.ft	- PORTATA POMPA OTTIMALE - FÖRDERMENGE DER PUMPE - PORTÉE DE LA POMPE - CAUDAL DE LA BOMBA - CAUDAL DA BOMBA - RECOMMENDED PUMP DELIVERY	70 l/m 18,4 gal/min	70 l/m 18,4 gal/min
- ANGOLO DI ROTAZIONE - SCHWENKBEREICH - ROTATION - GIRO - ROTAÇÃO - SLEWING ANGLE	∞	∞	- CAPACITÀ SERBATOIO OLIO - FASSUNGSVERMÖGEN DEL ÖLBEHALTERS - CAPACITÉ RÉSERVOIR HUILE - CAPACIDAD DEL DEPOSITO DE ACEITE I - CAPACIDAD DO DEPÓSITO DE OLEO - OIL TANK CAPACITY	250 l 65,72 gal	250 l 65,72 gal
- COPPIA MAX ROTAZIONE - MAX SCHWENKMOMENT - COUPLE MAXI. DE ROTATION - POTENCIA MÁXIMA DE GIRO - BINARIO MÁXIMO DE ROTAÇÃO - SLEWING TORQUE	3600 daN.m 26039 Psi	3600 daN.m 26039 Psi	- VEICOLO MIN. P.T.T. - LKW MIN. G.G.W. - CAMION MIN. P.T.A.C. - CAMION PESO MIN. P.T.T. - P.B. MIN CAMION - TRUCK MIN. G.V.W	32 t	32 t
- PRESSIONE MAX LAVORO - DRUCK - PRESSION - PRESSIÓN - PRESSÃO - MAX WORKING PRESSURE	320 bar 4640 psi	320 bar 4640 psi	- PESO GRU - GEWICHT - POIDS - PESO - PESO - CRANE WEIGHT	4960 kg 10912 Lbs	5140 Kg 11308 Lbs 4j3 5920_kg 13028_lbs 4j4 6020 kg 13248_lbs

I dati e le descrizioni del presente catalogo sono forniti a titolo indicativo e non sono vincolanti. COPMA si riserva il diritto di modificarli senza preavviso.
 Technical features are not binding. COPMA reserves itself the right to any modification without notice.

/5



/6



/5

/6

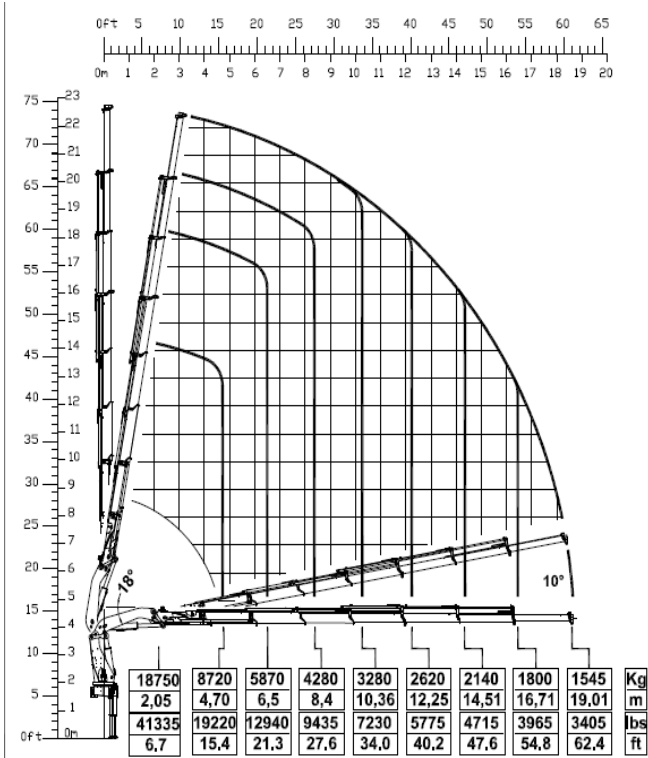
/5

/6

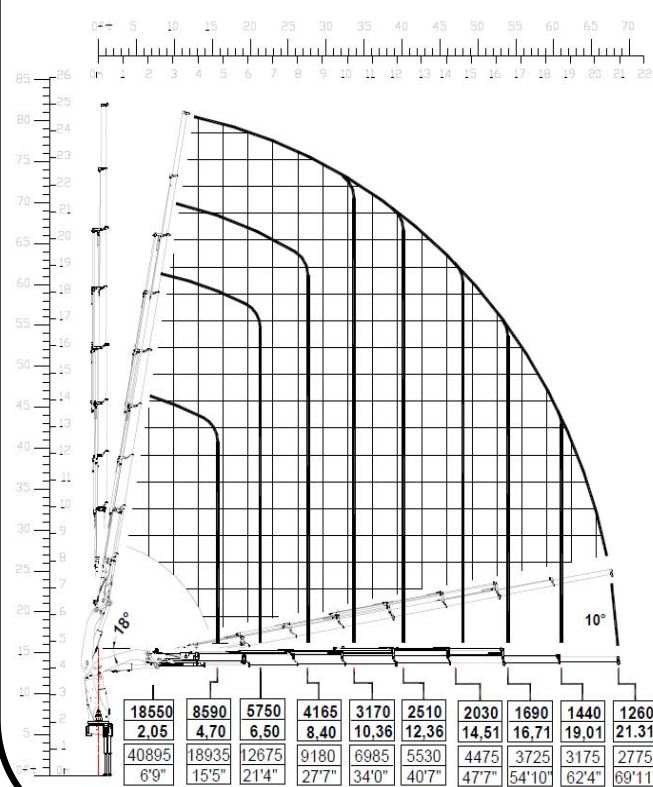
- MOMENTO MAX SOLLEVAMENTO - HUBMOMENT - COUPLE DE LEVAGE - MOMENTO - MOMENTO - MAX LIFTING MOMENT	413 kN.m 305277 lbs.ft	407 kN.m 294426 lbs.ft	- PORTATA POMPA OTTIMALE - FÖRDERMENGE DER PUMPE - PORTÉE DE LA POMPE - CAUDAL DE LA BOMBA - CAUDAL DA BOMBA - RECOMMENDED PUMP DELIVERY	70 l/m 18,4 gal/min	70 l/m 18,4 gal/min
- ANGOLO DI ROTAZIONE - SCHWENKBEREICH - ROTATION - GIRO - ROTAÇÃO - SLEWING ANGLE	∞	∞	- CAPACITÀ SERBATOIO OLIO - FASSUNGSVERMÖGEN DEL ÖLBEHALTERS - CAPACITÉ RÉSERVOIR HUILE - CAPACIDAD DEL DEPOSITO DE ACEITE I - CAPACIDAD DO DEPÓSITO DE OLEO - OIL TANK CAPACITY	250 l 65,72 gal	250 l 65,72 gal
- COPPIA MAX ROTAZIONE - MAX SCHWENKMOMENT - COUPLE MAXI. DE ROTATION - POTENCIA MÁXIMA DE GIRO - BINARIO MÁXIMO DE ROTAÇÃO - SLEWING TORQUE	3600 daN.m 26039 Psi	3600 daN.m 26039 Psi	- VEICOLO MIN. P.T.T. - LKW MIN. G.G.W. - CAMION MIN. P.T.A.C. - CAMION PESO MIN. P.T.T. - P.B. MIN CAMION - TRUCK MIN. G.V.W	32 t	32 t
- PRESSIONE MAX LAVORO - DRUCK - PRESSION - PRESSIÓN - PRESSÃO - MAX WORKING PRESSURE	320 bar 4640 psi	320 bar 4640 psi	- PESO GRU - GEWICHT - POIDS - PESO - PESO - CRANE WEIGHT	5300 Kg 11308 Lbs .5j3 6080_kg 13400_lbs .5j4 6180_kg 13620_lbs	5480 Kg 12056 Lbs .6j3 6260_kg 13776_lbs .6j4 6360_kg 13996_lbs

I dati e le descrizioni del presente catalogo sono forniti a titolo indicativo e non sono vincolanti. COPMA si riserva il diritto di modificarli senza preavviso.
 Technical features are not binding. COPMA reserves itself the right to any modification without notice.

17



18



17

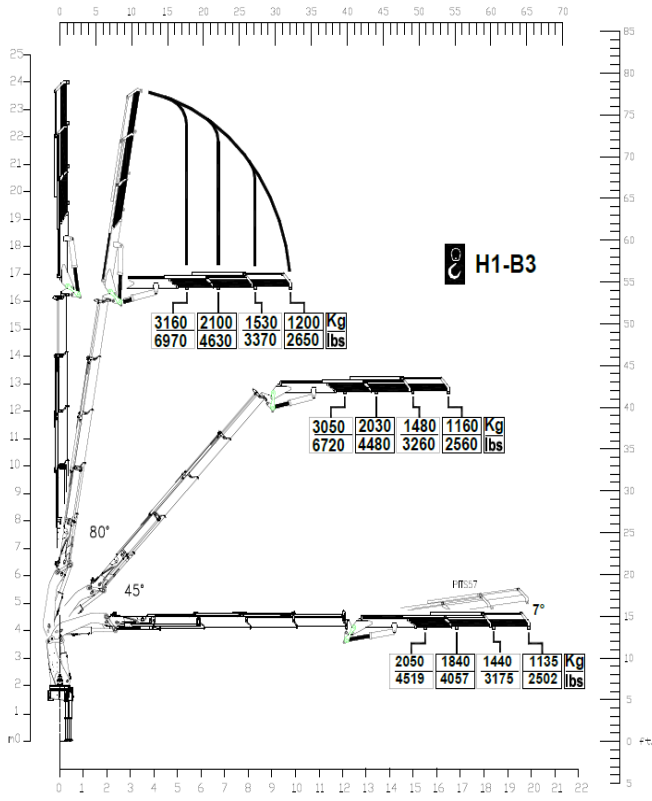
18

17

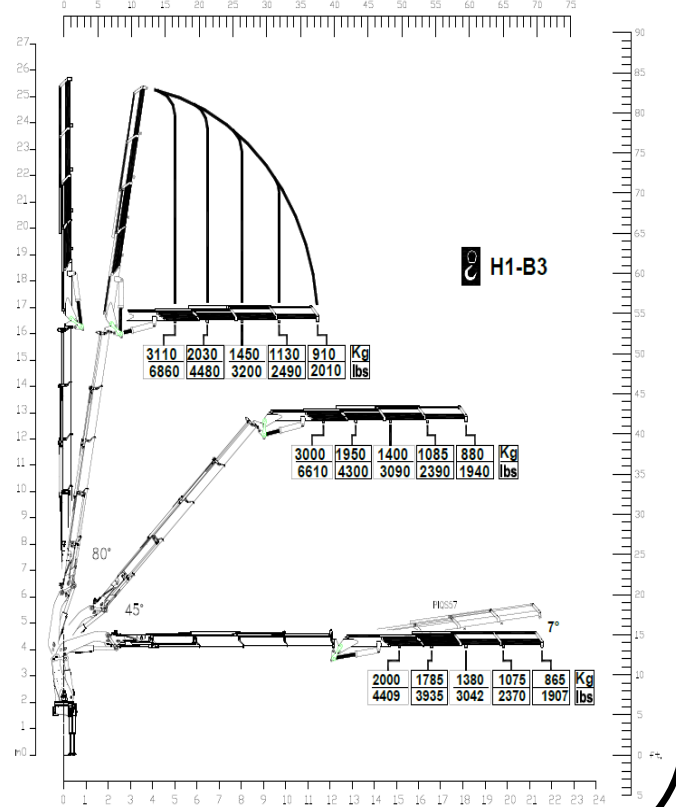
18

- MOMENTO MAX SOLLEVAMENTO - HUBMOMENT - COUPLE DE LEVAGE - MOMENTO - MOMENTO - MAX LIFTING MOMENT	402 kN.m 296515 lbs.ft	kN.m lbs.ft	- PORTATA POMPA OTTIMALE - FÖRDERMENGE DER PUMPE - PORTÉE DE LA POMPE - CAUDAL DE LA BOMBA - CAUDAL DA BOMBA - RECOMMENDED PUMP DELIVERY	70 l/m 18,4 gal/min	80 l/m 21,1 gal/min
- ANGOLO DI ROTAZIONE - SCHWENKBEREICH - ROTATION - GIRO - ROTAÇÃO - SLEWING ANGLE	∞	∞	- CAPACITÀ SERBATOIO OLIO - FASSUNGSVERMÖGEN DEL ÖLBEHAL- TERS - CAPACITÉ RÉSERVOIR HUILE - CAPACIDAD DEL DEPOSITO DE ACEITE I - CAPACIDAD DO DEPÓSITO DE OLEO - OIL TANK CAPACITY	250 l 65,72 gal	200 l 52,5 gal
- COPPIA MAX ROTAZIONE - MAX SCHWENKMOMENT - COUPLE MAXI. DE ROTATION - POTENCIA MÁXIMA DE GIRO - BINARIO MÁXIMO DE ROTAÇÃO - SLEWING TORQUE	3600 daN.m 26039 Psi	3600 daN.m 26039 Psi	- VEICOLO MIN. P.T.T. - LKW MIN. G.G.W. - CAMION MIN. P.T.A.C. - CAMION PESO MIN. P.T.T. - P.B. MIN CAMION - TRUCK MIN. G.V.W	32 t	32 t
- PRESSIONE MAX LAVORO - DRUCK - PRESSION - PRESSIÓN - PRESSÃO - MAX WORKING PRESSURE	320 bar 4640 psi	320 bar 4640 psi	- PESO GRU - GEWICHT - POIDS - PESO - PESO - CRANE WEIGHT	5480 Kg 12130 Lbs .73 6030_kg 13776_lbs .74 6095_kg 13290_lbs	5620 kg 12396 lbs

/4J3

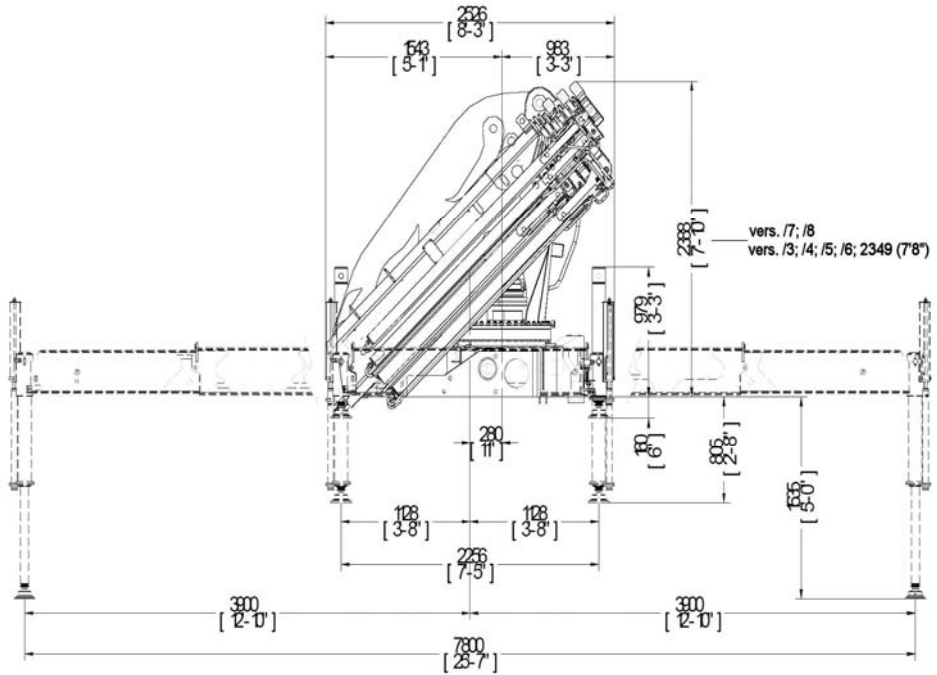
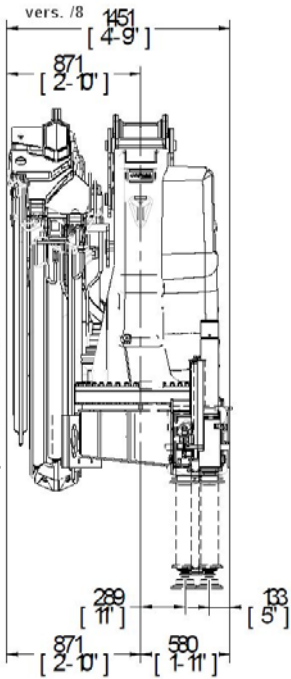


/4J4

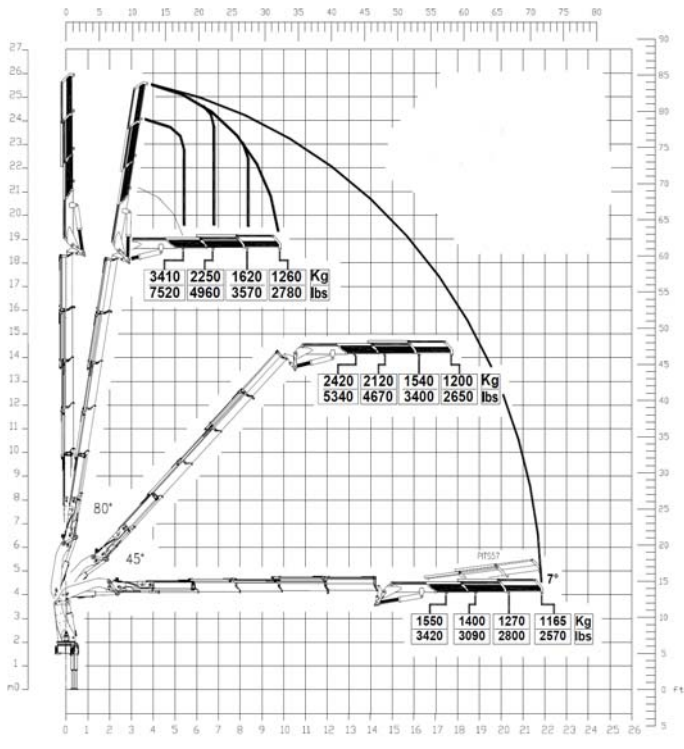


1329 (4'4") vers. /3/4
 1345 (4'5") vers. /5
 1422 (4'8") vers. /6
 1451 (4'9") vers. /7

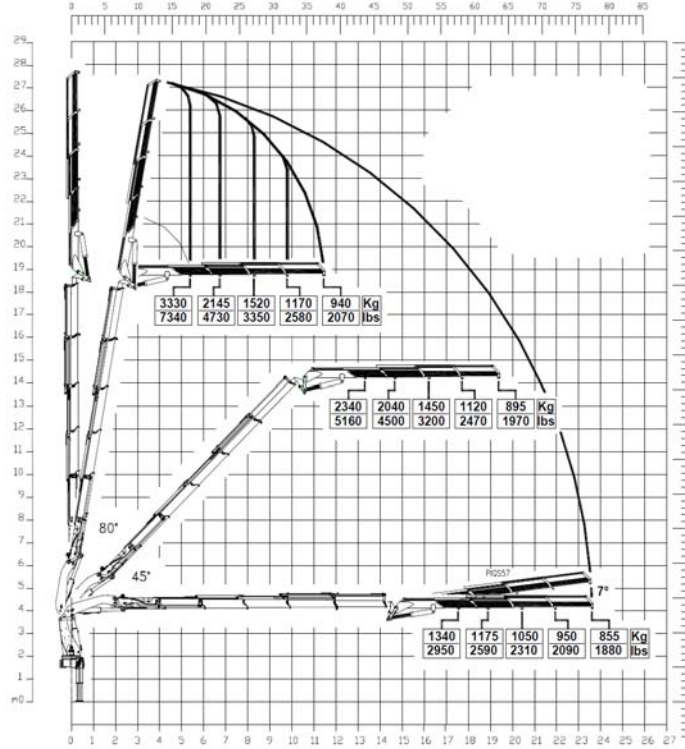
CABINA
 CABINE
 KABINE



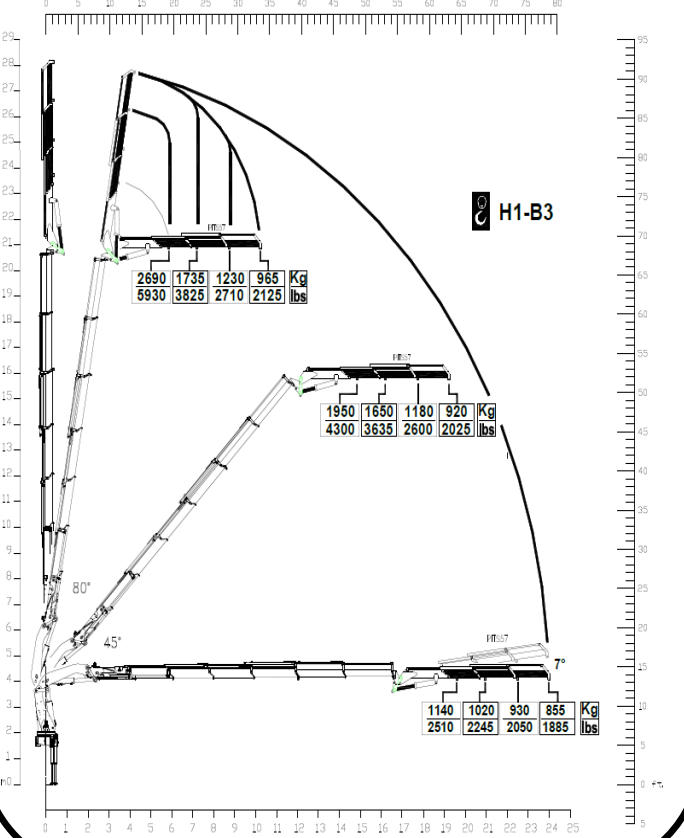
/5J3



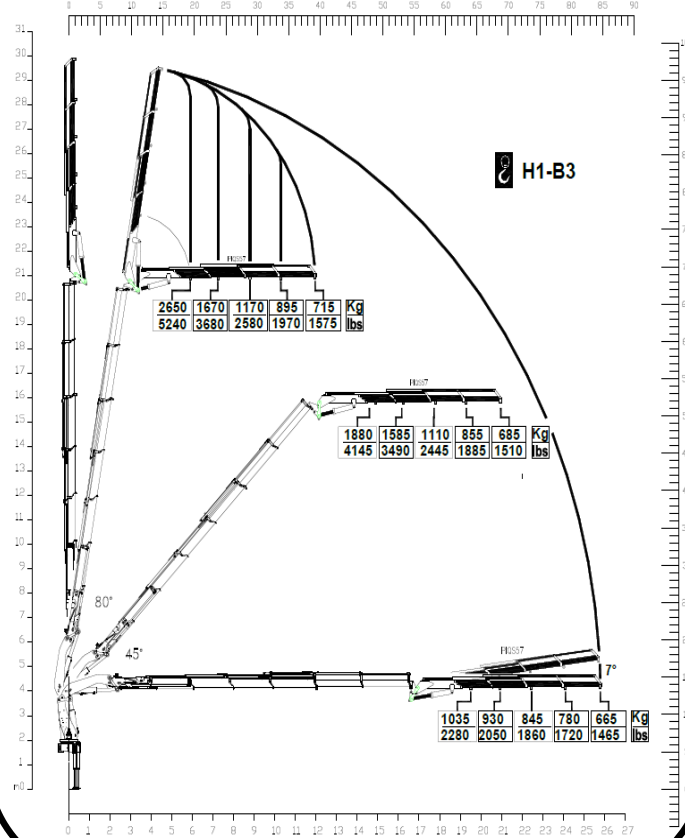
/5J4



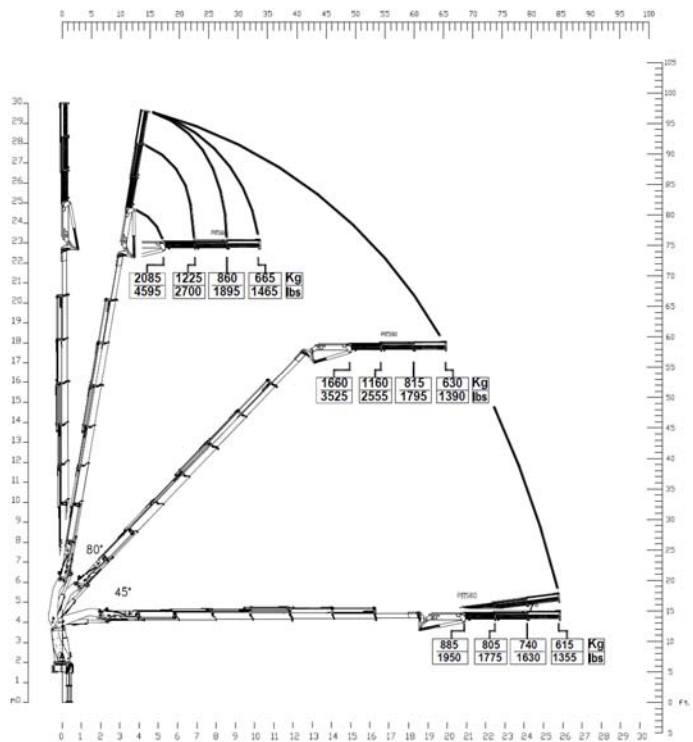
/6J3



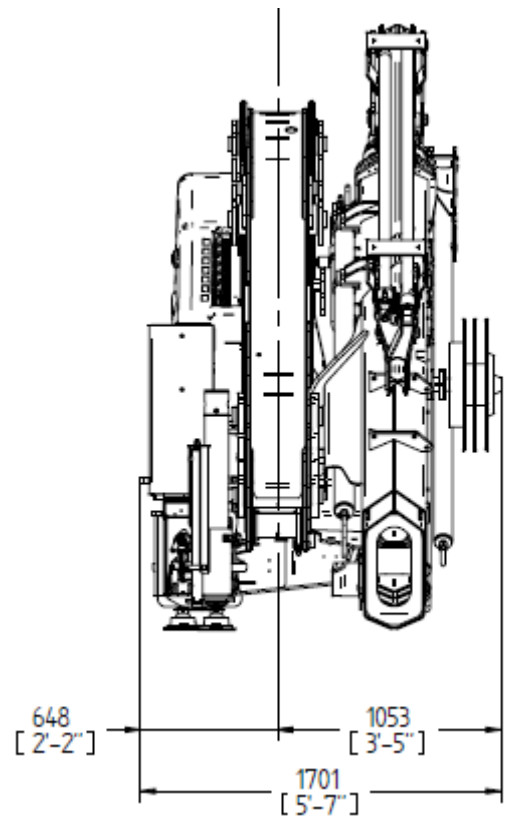
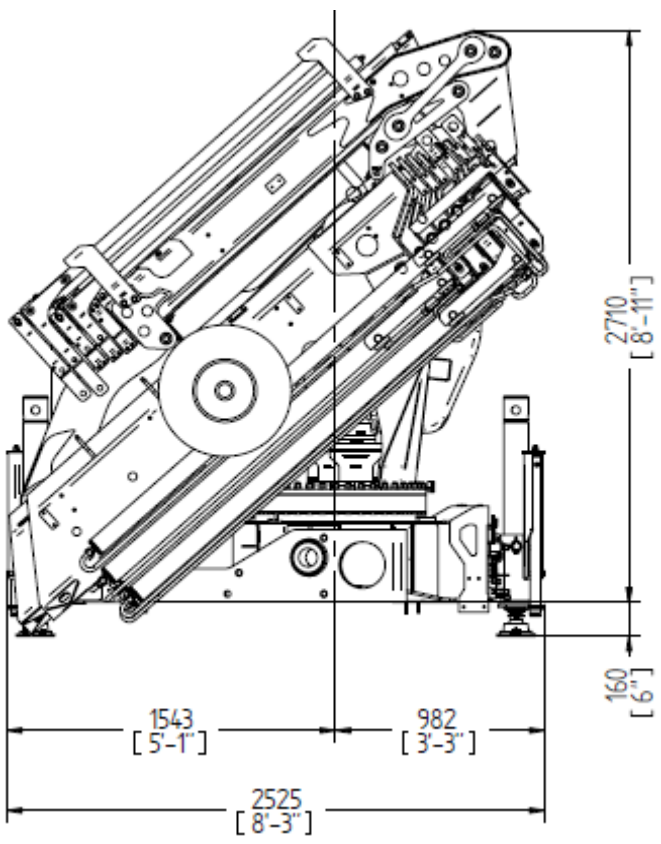
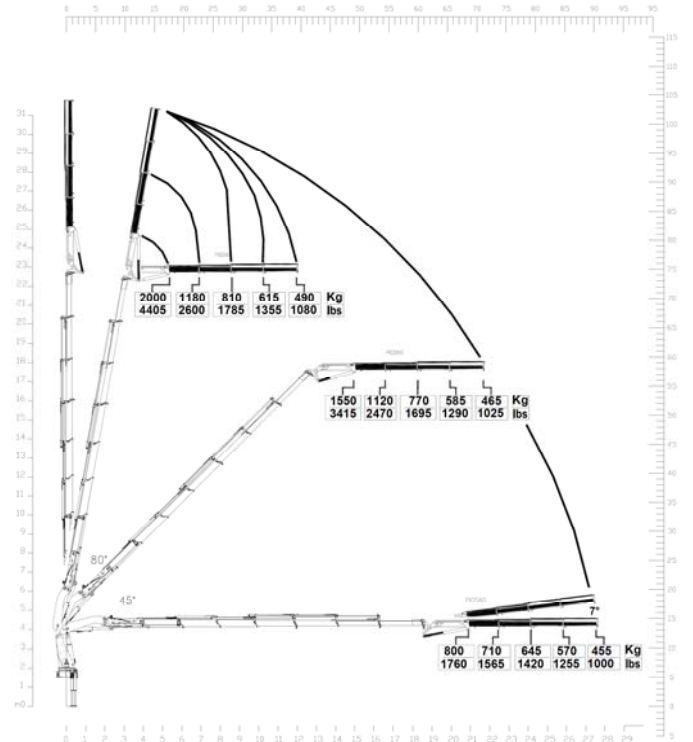
/6J4

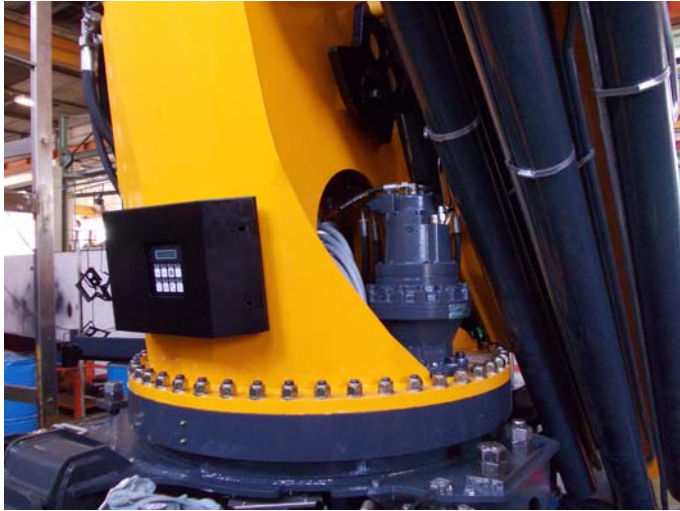


/7J3



/7J4





Costruttore C.P.S. srl Via Emilia levante, 281
48014 Castel Bolognese (RA) – ITALIA
Tel. +39 (0)546 653833 Fax. +39 (0)546 656205
E-Mail info@copma-cranes.com
www.copma-cranes.com