

# Translyft

## LIFTING TABLES

### Single/Double Scissor



Single Scissor



Double Vertical



Double Horizontal



[www.translyft.com](http://www.translyft.com)

A well-organised work place improves efficiency and productivity as well as relieving the operator from everyday stresses caused by bending, lifting and stretching.



A flexible solution that is quick and simple because the table is not mounted in a pit.



The frames are hung from the hooks on the conveyor rail. The scissor lift enables a convenient working position for the operator who is handling many items throughout the day.

The lifting table is fitted with truck sleeves, and the support legs of the stacker go under the base frame when the pallet is removed.



A classic example is shown in the wood industry. An item is taken from a pallet, machined and then passed on to another pallet. With a table at both sides the operator can work at a comfortable height and raise efficiency by 20-30%.



# Solve all your lifting problems

Where heavy loads, awkward working postures and height variations produce a problem, a Translyft lifting table can provide the solution.

Our 25 years of experience combined with a standard range of more than 100 models offer you the best possible solutions. Translyft lifting tables are developed and produced at our factory in Dybvad, and we offer a large range of specials and accessories, designed by our engineers in cooperation with our customers.

The Translyft range also includes lifting tables made of stainless steel or hot galvanised steel - or in a combination, if this offers the best solution to the job in question.

We use silent 1400-rpm motors. The most common models with a 0.75 kW motor have a noise level as silent as 52 dBA, a feature of great importance today as the noise level is an important part in worker safety.

A correct working posture and operations without heavy lifting produce dramatically improved efficiency due to the employees being less fatigued, a reduction in absenteeism and a happier, more content workforce.



[www.translyft.com](http://www.translyft.com)



# Single Scissor



A turntable platform can improve working conditions when loading and unloading pallets.

After unloading one side of the pallet the platform is turned 180 degrees to reach the other half of the pallet preventing the operator from stretching across.

The lifting table shown above is mounted in a pit. The operator can take the boxes in a horizontal move without bending improving the safety of the worker.

The lifting tables are fitted with truck sleeves. This gives you 2 advantages: It is easy to move the table between 2 or more working stations, and you can feed the table with a stacker because the front legs go beneath the base frame.

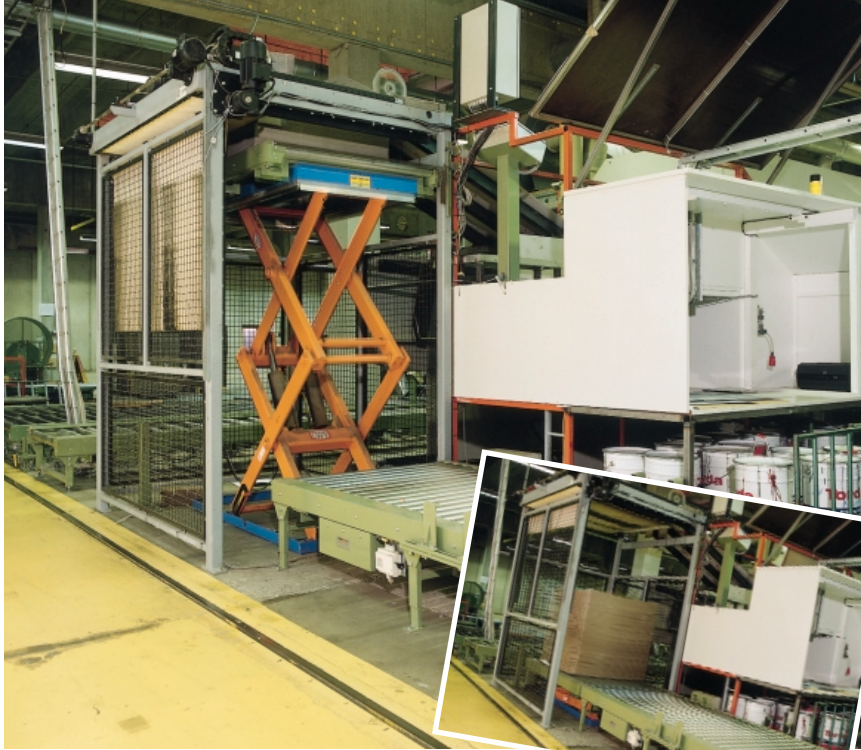
## Single Scissor



The lifting table shown above is mounted in a pit. The operator takes the boxes in a horizontal move without bending, thus improving the workers safety.

Type	Travel mm	Closed height mm	Total raised height mm	Length mm	Width mm	Lift time sek	Motor kW	Weight kg
TR 500	550	160	710	900	650	8	0,37	95
TR 1000 A	550	160	710	900	650	16	0,37	110
TR 1000	550	160	710	900	900	16	0,37	120
TR 2000f	550	200	750	900	900	13	0,75	160
TL 1000	830	180	1010	1300	650	18	0,75	160
TL 1000 B	830	180	1010	1300	800	18	0,75	170
TL 1000 F	830	180	1010	1300	1000	18	0,75	185
TL 2000	820	210	1030	1300	800	22	0,75	220
TL 2000 F	820	210	1030	1300	1000	22	0,75	235
TL 3000	800	240	1040	1300	1000	18	2,2	310
TB 1000	1000	210	1210	1500	800	22	0,75	230
TB 1000 F	1000	210	1210	1500	1000	22	0,75	240
TB 2000	1000	210	1210	1500	800	25	0,75	255
TM 1500	1100	230	1330	1700	900	22	0,75	300
TM 1500 B	1100	230	1330	1700	1200	22	0,75	345
TM 3000	1100	250	1350	1700	900	25	2,2	400
TM 3000 B	1100	250	1350	1700	1200	25	2,2	420
TM 6000	1100	300	1400	1700	900	50	2,2	700
TA 1000 A	1400	250	1650	2000	900	35	0,75	440
TA 1000	1400	250	1650	2000	1200	35	0,75	485
TA 2000 A	1400	250	1650	2000	900	35	2,2	475
TA 2000	1400	250	1650	2000	1200	35	2,2	520
TA 2000 B	1400	250	1650	2000	1500	35	2,2	530
TA 2000 R	1400	250	1650	2000	2000	35	2,2	590
TA 4000 B	1300	300	1600	2000	1500	54	3,0	880
TA 4000 R	1300	300	1600	2000	2000	54	3,0	940
TS 2000	1500	250	1750	2200	1200	35	2,2	535
TS 2000 B	1500	250	1750	2200	1500	35	2,2	580
TS 4000	1500	350	1850	2200	1200	54	3,0	840
TS 4000 B	1500	350	1850	2200	1500	54	3,0	900
TT 1500	1650	300	1950	2500	800	35	1,1	380
TT 1500 B	1650	300	1950	2500	1200	35	1,1	450
TT 3000	1600	350	1950	2500	1000	35	2,2	610
TT 3000 B	1600	350	1950	2500	1500	35	2,2	830
TT 3000 R	1600	350	1950	2500	2000	35	2,2	950
TT 6000	1500	450	1950	2500	1300	50	4,0	1250
TP 3000	2000	400	2400	3100	1500	50	3,0	1100
TP 6000	2000	500	2500	3100	1500	75	4,0	1600

# Double Scissor Vertical



A large number of lifting tables are used within the paper and cardboard industry.

Here a table is used for stacking cardboard boxes to a height of 2000 mm. When the pallet is full, it is taken away by the integrated conveyor system.



The container and pallet heights are constantly growing.

The high pallets must be loaded and unloaded quickly. In order to create acceptable working conditions the best solution is to mount the lifting table below floor level in such a way that it lifts for example 50% below and 50% above floor level.

## Double Vertical



Type	Capacity kg	Travel mm	Closed height mm	Total raised height mm	Length mm	Width mm	Lift time sek	Motor kW	Weight kg
TRD 500		1100	270	1370	900	650	18	0,37	140
TLD 1000		1600	360	1960	1300	800	30	0,75	330
TLD 1000 F		1600	360	1960	1300	1000	30	0,75	345
TLD 2000		1600	400	2000	1300	900	32	2,2	395
TLD 2000 F		1600	400	2000	1300	1000	32	2,2	430
TBD 1000		1800	400	2200	1500	900	30	0,75	450
TBD 1000 B		1800	400	2200	1500	1200	30	0,75	480
TBD 2000		1800	400	2200	1500	900	28	2,2	500
TBD 2000 B		1800	400	2200	1500	1200	28	2,2	515
TMD 1000		2150	400	2550	1700	900	34	0,75	520
TMD 1000 B		2150	400	2550	1700	1200	34	0,75	570
TMD 2000		2150	400	2550	1700	900	36	2,2	545
TMD 2000 B		2150	400	2550	1700	1200	36	2,2	600
TAD 1000		2800	450	3250	2000	1200	34	0,75	635
TAD 2000		2800	450	3250	2000	1200	36	2,2	660
TSD 1500		3000	450	3450	2200	1300	50	2,2	1100
TTD 3000		3000	600	3600	2500	1300	65	3,0	1500



# Double Scissor Horizontal



The Translyft double horizontal model is a long table with a large lifting capacity.

Within the machine industry there are many heavy, long items that are lifted or lowered. At this radiator factory the table is used in the quality check of the radiators, and this process has been made much easier with the installation of the lifting table.



Long tables are often used in sawmills. The industry shown in the picture uses a table for lifting a trolley with long beams. The stand to the right is a photocell, which automatically adjusts the height of the load.

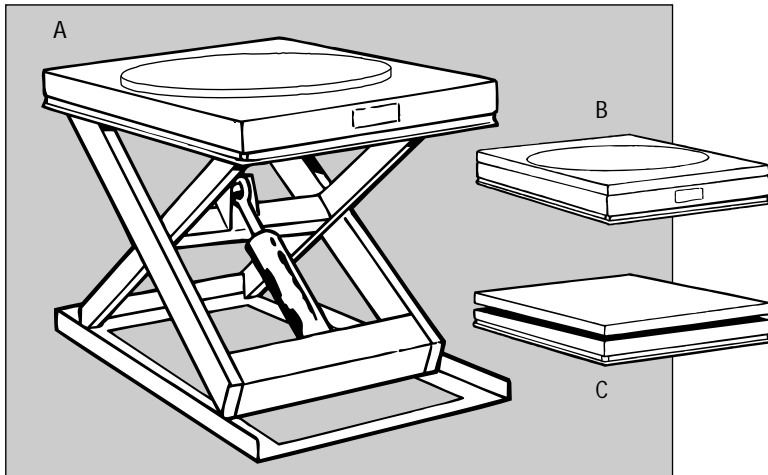
## Double Horizontal

Visit us at  
[www.translyft.com](http://www.translyft.com)  
and find more about

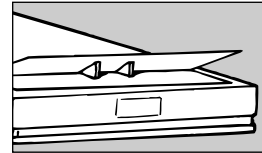
- Superlow lifting tables
- Stainless lifting tables
- Loading bay lifts

Type	Capacity kg	Travel mm	Closed height mm	Total raised height mm	Length mm	Width mm	Lift time sek	Motor kW	Weight kg
TRH 1000		550	160	710	1800	650	16	0,37	210
TLH 2000 A		830	180	1010	2600	650	32	0,75	290
TLH 2000		830	180	1010	2600	800	32	0,75	310
TLH 4000		820	210	1030	2600	800	40	0,75	440
TMH 3000		1100	230	1330	3400	900	40	0,75	550
TMH 3000 B		1100	230	1330	3400	1200	40	0,75	590
TMH 6000		1100	250	1350	3400	900	50	2,2	775
TAH 2000 A		1400	250	1650	4000	900	35	2,2	755
TAH 2000		1400	250	1650	4000	1200	35	2,2	845
TAH 4000 A		1400	250	1650	4000	900	60	2,2	920
TAH 4000		1400	250	1650	4000	1200	60	2,2	1010
TSH 4000		1500	250	1750	4400	1200	60	2,2	920
TSH 8000f		1500	350	1850	4400	1200	60	3,0	1550
TTH 3000 B		1650	300	1950	5000	1200	40	2,2	1100
TTH 6000		1600	350	1950	5000	1300	45	3,0	2000

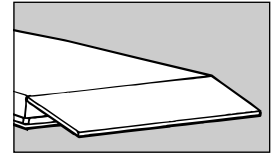
# ACCESSORIES



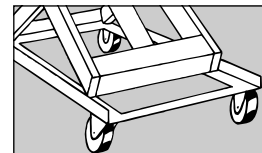
- A = turntable mounted on the platform
- B = turntable built into the platform
- C = turntable platform



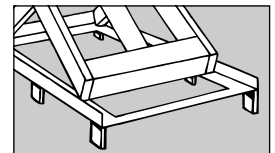
Automatic stop



Lip

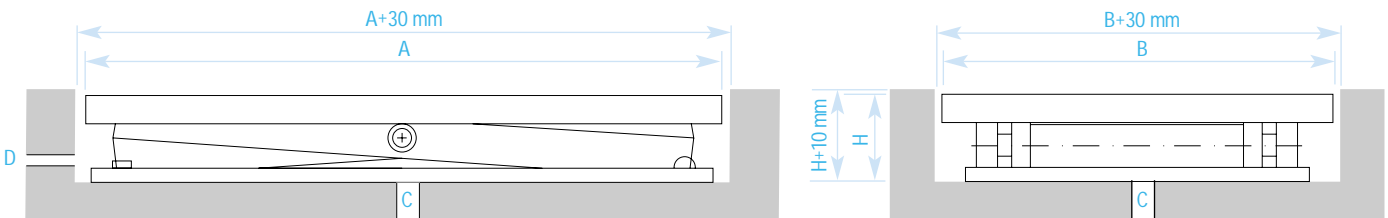


Wheel equipment



Truck sleeves

## PIT



D: Wiring tube  $\varnothing = 50$  mm

C: Outlet  $\varnothing = 50-100$  mm

# TECHNICAL SPECIFICATIONS

Translyft lifting tables are CE marked. They are manufactured in accordance with current rules for lifting tables and conform to the EU machine directory and EN 1570.

All steel is cleaned, primed with rust-preventing paint and coated with 2-component polyurethane lacquer. The bottom frame and platform are finished in Blue RAL 5015, and the scissors in Orange RAL 2003, providing a tough and wear resistant surface.

A pressure compensating adjustable lowering valve for full adjustment of the lowering speed is fitted as standard. An emergency stop valve is also built into all cylinders.

The two maintenance safety bars lock the table during service and repairs.

The tables are designed for a power supply with 3 x 415 V/50 Hz + earth + 0. The voltage on all functions is 24 V DC. The electric box with the control PCB and the pushbutton box are sealed according to IP 65, while the table as a whole is IP 54.

All motors have 1400 rpm, which means that the motor has a long life, and a low noise level for the power system. All tables fulfil current noise level requirements and lie at a level starting on 52 dBA.

Download leaflets of the large TRANSLYFT programme from [www.translyft.com](http://www.translyft.com)



## TRANSLYFT ERGO A/S

Administration/Sales:  
Aalborgvej 321  
DK-9352 Dybvad  
Tlf +45 98 86 49 00  
Fax +45 98 86 49 10

Export/Sales:  
Hørskættø 14  
DK-2630 Taastrup  
Tlf +45 43 52 52 11  
Fax +45 43 52 48 53

E-mail:  
[dybvad@translyft.com](mailto:dybvad@translyft.com)  
[taastrup@translyft.com](mailto:taastrup@translyft.com)

[www.translyft.com](http://www.translyft.com)